



TEL:4006-871-227 Web:www.ybio.net Email:shybio@126.com

YBL872Hu01 100μg

Recombinant USP6 N-Terminal Like Protein (USP6NL)

Organism Species: Homo sapiens (Human)

Instruction manual

FOR IN VITRO USE AND RESEARCH USE ONLY

NOT FOR USE IN CLINICAL DIAGNOSTIC PROCEDURES

10th Edition (Revised in Jan, 2014)

[PROPERTIES]

Residues: Met1~Gly292

Tags: Two N-terminal Tags, His-tag and T7-tag

Accession: Q92738

Host: *E. coli*

Subcellular Location: Cytoplasmic vesicle. Golgi apparatus.

Purity: >90%

Endotoxin Level: <1.0EU per 1μg (determined by the LAL method).

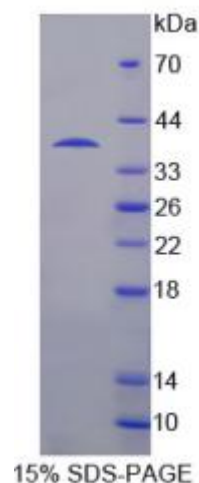
Formulation: Supplied as lyophilized form in PBS, pH7.4, containing 5% trehalose, 0.01% sarcosyl.

Predicted isoelectric point: 8.3

Predicted Molecular Mass: 38.8kDa

Applications: SDS-PAGE; WB; ELISA; IP.

(May be suitable for use in other assays to be determined by the end user.)



[USAGE]



TEL:4006-871-227

Web:www.ybio.net

Email:shybio@126.com

Reconstitute in sterile PBS, pH7.2-pH7.4.



TEL:4006-871-227 Web:www.ybio.net Email:shybio@126.com

[STORAGE AND STABILITY]

Storage: Avoid repeated freeze/thaw cycles.

Store at 2-8°C for one month.

Aliquot and store at -80°C for 12 months.

Stability Test: The thermal stability is described by the loss rate of the target protein. The loss rate was determined by accelerated thermal degradation test, that is, incubate the protein at 37°C for 48h, and no obvious degradation and precipitation were observed. (Referring from China Biological Products Standard, which was calculated by the Arrhenius equation.) The loss of this protein is less than 5% within the expiration date under appropriate storage condition.

[SEQUENCES]

The sequence of the target protein is listed below.

MNSDQDVALK LAQERAEIVA KYDRGREGAE IEPWEDADYL VYKVTDRFGF LHEEELPDHN
VAVERQKHLE IERTTKWLKM LKGWEKYKNT EKFHRRYKGI IPLQLRGEVW ALLLEIPKMK
EETRDLYSKL KHRARGCSPD IRQIDLDVNR TFRDHIMFRD RYGVKQQSLF HVLAAYSIN
TEVGYCQGMS QITALLLMYM NEEDAFWALV KLFSGPKHAM HGFFVQGFPK LLRFQEHHEK
ILNKFLSKLK QHLDSEIYT SFYTMKWFFQ CFLDRTPFTL NLRIWDIYIF EG