



TEL:4006-871-227 Web:www.ybio.net Email:shybio@126.com

YBD827Hu01 100µg
Recombinant Phospholipase A2, Group IIA (PLA2G2A)
Organism Species: Homo sapiens (Human)
Instruction manual

FOR IN VITRO USE AND RESEARCH USE ONLY
NOT FOR USE IN CLINICAL DIAGNOSTIC PROCEDURES

10th Edition (Revised in Jan, 2014)

[PROPERTIES]

Residues: Asn21~Cys144

Tags: Two N-terminal Tags, His-tag and T7-tag

Accession: P14555

Host: *E. coli*

**Subcellular Location: Membrane; Peripheral
membrane protein.**

Purity: >95%

**Endotoxin Level: <1.0EU per 1µg (determined by the
LAL method).**

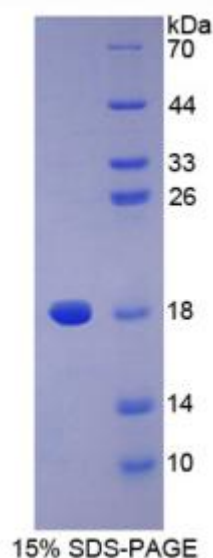
**Formulation: Supplied as lyophilized form in PBS,
pH7.4, containing 5% trehalose, 0.01% sarcosyl.**

Predicted isoelectric point: 9.5

Predicted Molecular Mass: 17.7kDa

Applications: SDS-PAGE; WB; ELISA; IP.

(May be suitable for use in other assays to be determined by the end user.)



[USAGE]

Reconstitute in sterile PBS, pH7.2-pH7.4.



TEL:4006-871-227 Web:www.ybio.net Email:shybio@126.com

[STORAGE AND STABILITY]

Storage: Avoid repeated freeze/thaw cycles.

Store at 2-8°C for one month.

Aliquot and store at -80°C for 12 months.

Stability Test: The thermal stability is described by the loss rate of the target protein. The loss rate was determined by accelerated thermal degradation test, that is, incubate the protein at 37°C for 48h, and no obvious degradation and precipitation were observed. (Referring from China Biological Products Standard, which was calculated by the Arrhenius equation.) The loss of this protein is less than 5% within the expiration date under appropriate storage condition.

[SEQUENCES]

The sequence of the target protein is listed below.

NLVNFHRMIK LTTGKEAALS YGFYGCHCGV GGRGSPKDAT DRCCVTHDCC YKRLEKRGCG
TKFLSYKFSN SGSRITCAKQ DSCRSQLCEC DKAAATCFAR NKTTYNKKYQ YYSNKHCRGS
TPRC