



TEL:4006-871-227 Web:www.ybio.net Email:shybio@126.com

YB507Mu01 50 μ g

Recombinant Family With Sequence Similarity 3, Member B (FAM3B)

Organism Species: *Mus musculus* (Mouse)

Instruction manual

FOR IN VITRO USE AND RESEARCH USE ONLY

NOT FOR USE IN CLINICAL DIAGNOSTIC PROCEDURES

10th Edition (Revised in Jan, 2014)

[PROPERTIES]

Residues: Glu30~Arg235

Tags: Two N-terminal Tags, His-tag and T7-tag

Accession: Q9D309

Host: *E. coli*

Subcellular Location: Secreted.

Purity: >95%

Endotoxin Level: <1.0EU per 1 μ g (determined by the LAL method).

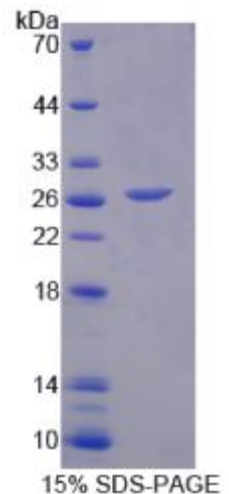
Formulation: Supplied as lyophilized form in 20mM Tris, 150mM NaCl, pH8.0, containing 1mM EDTA, 1mM DTT, 0.01% sarcosyl, 5% trehalose, and preservative.

Predicted isoelectric point: 8.8

Predicted Molecular Mass: 26.6kDa

Applications: SDS-PAGE; WB; ELISA; IP.

(May be suitable for use in other assays to be determined by the end user.)



[USAGE]



TEL:4006-

871-227 Web:www.ybio.net

Email:shybio@126.com

Reconstitute in sterile ddH₂O.



TEL:4006-871-227 Web:www.ybio.net

Email:shybio@126.com

[STORAGE AND STABILITY]

Storage: Avoid repeated freeze/thaw cycles.

Store at 2-8°C for one month.

Aliquot and store at -80°C for 12 months.

Stability Test: The thermal stability is described by the loss rate of the target protein. The loss rate was determined by accelerated thermal degradation test, that is, incubate the protein at 37°C for 48h, and no obvious degradation and precipitation were observed. (Referring from China Biological Products Standard, which was calculated by the Arrhenius equation.) The loss of this protein is less than 5% within the expiration date under appropriate storage condition.

[SEQUENCES]

The sequence of the target protein is listed below.

E LIPDVPLSST LYNIRSIGER PVLKAPAPKR QKCDHWSPCP PDTYAYRLLS GGGRDKYAKI
CFEDEVLIGE KTG NVARGIN IAVVNYETGK VIATKYFD MY EGDNSG PMAK FIQSTPSKSL
LFMVTHDDGS SKLKAQAKDA IEALGSKEIK NMKFRSSWVF VAAKGFELPS EIEREKINHS
DQSRNRYAGW PAEIQIEGCI PKGLR

[REFERENCES]

1. Wang O., *et al.* (2008) *Endocrinology* 149:672-680.
2. Johansson P., *et al.* (2013) *Structure* 21:306-313.
3. Robert-Cooperman C.E., *et al.* (2010) *Diabetes* 59:2209-2218.
4. Xiang J.N., *et al.* (2012) *Biochem. Biophys. Res. Commun.* 421:701-706.