



TEL:4006-871-227 Web:www.ybio.net Email:shybio@126.com

YBG356Hu01 100μg

Recombinant 3-Hydroxybutyrate Dehydrogenase 1 (BDH1)

Organism Species: Homo sapiens (Human)

Instruction manual

FOR IN VITRO USE AND RESEARCH USE ONLY

NOT FOR USE IN CLINICAL DIAGNOSTIC PROCEDURES

10th Edition (Revised in Jan, 2014)

[PROPERTIES]

Residues: Met1~Arg343

Tags: Two N-terminal Tags, His-tag and T7-tag

Accession: Q02338

Host: *E. coli*

**Subcellular Location: Mitochondrion matrix. Purity:
>95%**

**Endotoxin Level: <1.0EU per 1μg (determined by the LAL
method).**

**Formulation: Supplied as lyophilized form in PBS, pH7.4,
containing 5% trehalose, 0.01% sarcosyl.**

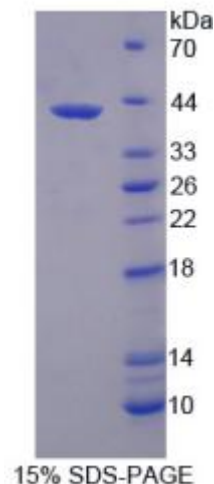
**Predicted isoelectric point: 9.1 Predicted Molecular Mass:
41.8kDa**

Applications: SDS-PAGE; WB; ELISA; IP.

(May be suitable for use in other assays to be determined by the end user.)

[USAGE]

Reconstitute in sterile PBS, pH7.2-pH7.4.





TEL:4006-871-227 Web:www.ybio.net Email:shybio@126.com

[STORAGE AND STABILITY]

Storage: Avoid repeated freeze/thaw cycles.

Store at 2-8°C for one month.

Aliquot and store at -80°C for 12 months.

Stability Test: The thermal stability is described by the loss rate of the target protein. The loss rate was determined by accelerated thermal degradation test, that is, incubate the protein at 37°C for 48h, and no obvious degradation and precipitation were observed. (Referring from China Biological Products Standard, which was calculated by the Arrhenius equation.) The loss of this protein is less than 5% within the expiration date under appropriate storage condition.

[SEQUENCES]

The sequence of the target protein is listed below.

**MLATRLSRPL SRLPGKTLA CDRENGARRP LLLGSTSFIP IGRRTYASAA EPVGSKAVLV
TGCDSGFGFS LAKHLHSGKF LVFAGCLMKD KGHGKVKELD SLNSDRLRTV QLNVCSSSEV
EKVVEIVRSS LKDPEKGMWG LVNNAGISTF GEVEFTSLET YKQVAEVLNW GTVRMTKSFL
PLIRRAKGRV VNISSMLGRM ANPARSPYCI TKFGVEAFSD CLRYEMYPLG VKVSVVEPGN
FIAATSLYSP ESIQAIKKM WEELPEVVRK DYGKKYFDEK IAKMETYCSS GSTDTSPVID
AVTHALTATT PYTRYHPMDY YWWLRMQIMT HLPGAISDMI YIR**