



TEL:4006-871-227 Web:www.ybio.net Email:shybio@126.com

**YB93506Ra
01**

Heat Shock 70kDa Binding Protein 1 (HSPBP1)

Organism: Rattus norvegicus (Rat)

Instruction manual

FOR IN VITRO USE AND RESEARCH USE ONLY

NOT FOR USE IN DIAGNOSTIC OR THERAPEUTIC PROCEDURES

5th Edition (Revised in January, 2013)

[DESCRIPTION]

Protein Names: Heat Shock 70kDa Binding Protein 1

Synonyms: HSPBP1, Hspbp

Species: Rat

Size: 100μg

Source: *Escherichia coli*-derived

[PROPERTIES]

Residues: Ser198~Asp352 (Accession # Q6IMX7),
with N-terminal His-Tag.

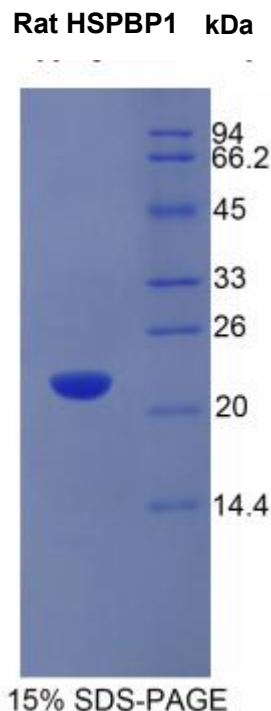
Grade & Purity: >95%, 22kDa as determined by
SDS-PAGE reducing conditions.

Formulation: Supplied as lyophilized form in PBS,
pH 7.4, containing 5% sucrose.

Endotoxin Level: <1.0 EU per 1μg (determined by
the LAL method).

Applications: SDS-PAGE; WB; ELISA; IP.

(May be suitable for use in other assays to be
determined by the end user.)





TEL:4006-871-227 Web:www.ybio.net Email:shybio@126.com

Predicted Molecular Mass: 19.2kDa

Predicted isoelectric point: 6.1



TEL:4006-871-227 Web:www.ybio.net Email:shybio@126.com

[PREPARATION]

Reconstitute in sterile PBS, pH7.2-pH7.4.

[STORAGE AND STABILITY]

Storage: Avoid repeated freeze/thaw cycles.

Store at 2-8°C for one month.

Aliquot and store at -80°C for 12 months.

Stability Test: The thermal stability is described by the loss rate of the target protein. The loss rate was determined by accelerated thermal degradation test, that is, incubate the protein at 37°C for 48h, and no obvious degradation and precipitation were observed. (Referring from China Biological Products Standard, which was calculated by the Arrhenius equation.) The loss of this protein is less than 5% within the expiration date under appropriate storage condition.

[SEQUENCES]

The target protein is fused with N-terminal His-Tag, its sequence is listed below.

MGHHHHHSGSEF-SCD TVRVKALFAI SCLVREQEAG LLQFLRLDGF SVLMRAMQQQ
VQKLKVKSAF LLQNLLVGHP EHKGTLCSMG MVQQLVALVR TEHSPFHEHV LGALCSLVTD
FPQGVRECRE PELGLEELLR HRCQLLQQHE EYQEELEFCE KLLQTCFSSP TD