



TEL:4006-871-227 Web:www.ybio.net Email:shybio@126.com

**YBB169Mu01 100μg**

**Recombinant Nucleoporin 214kDa (NUP214)**

**Organism Species: Mus musculus (Mouse)**

***Instruction manual***

**FOR IN VITRO USE AND RESEARCH USE ONLY**

**NOT FOR USE IN CLINICAL DIAGNOSTIC PROCEDURES**

10th Edition (Revised in Jan, 2014)

## **[ PROPERTIES ]**

**Residues: Ser601~Arg868**

**Tags: Two N-terminal Tags, His-tag and T7-tag**

**Accession: Q80U93**

**Host: *E. coli***

**Subcellular Location: Nucleus, nuclear pore complex.**

**Purity: >95%**

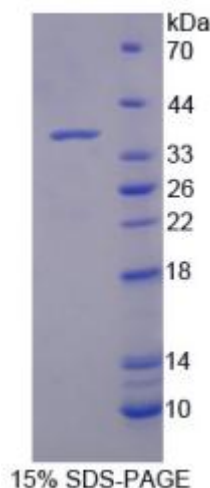
**Endotoxin Level: <1.0EU per 1μg (determined by the LAL method).**

**Formulation: Supplied as lyophilized form in PBS, pH7.4, containing 5% trehalose, 0.01% sarcosyl.**

**Predicted isoelectric point: 8.9 Predicted Molecular**

**Mass: 33.6kDa**

**Accurate Molecular Mass: 37kDa as determined by SDS-PAGE reducing**



The possible reasons that the actual band size differs from the predicted are as follows:

**conditions. Applications: SDS-PAGE; WB; ELISA; IP.**

**(May be suitable for use in other assays to be determined by the end user.)**

**Note:**

1. Splice variants: Alternative splicing may create different sized proteins from the same gene.
2. Relative charge: The composition of amino acids may affects the charge of the protein.
3. Post-translational modification: Phosphorylation, glycosylation, methylation etc.



TEL:4006-871-227 Web:www.ybio.net Email:shybio@126.com

**4. Post-translation cleavage: Many proteins are synthesized as pro-proteins, and then cleaved to give the active form.**

**5. Polymerization of the target protein: Dimerization, multimerization etc.**



TEL:4006-871-227 Web:www.ybio.net

Email:shybio@126.com

## **[ USAGE ]**

**Reconstitute in sterile PBS, pH7.2-pH7.4.**

## **[ STORAGE AND STABILITY ]**

**Storage: Avoid repeated freeze/thaw cycles.**

**Store at 2-8°C for one month.**

**Aliquot and store at -80°C for 12 months.**

**Stability Test:** The thermal stability is described by the loss rate of the target protein. The loss rate was determined by accelerated thermal degradation test, that is, incubate the protein at 37°C for 48h, and no obvious degradation and precipitation were observed. (Referring from China Biological Products Standard, which was calculated by the Arrhenius equation.) The loss of this protein is less than 5% within the expiration date under appropriate storage condition.

## **[ SEQUENCES ]**

**The sequence of the target protein is listed below.**

**SVLPFSSSPK PTASGPLSHP TLPASSSSM PLKSSVSPSP AAGRSTQTAP SSAPSTGQKS  
PRVNPVPKS GSSQAKALQP PVTEKQRPQW KDSDPVLGI GEEIAHFQKE LEELKARTAK  
ACLQVGTSEE MKMLRTESDD LHTFLFEIRE TTESLHGDIS TLKTTLLEGF AGVEEAREQH  
GRNHDSGYLH LLYKRPLDPK SEAQLQEIRR LHQYVKFAVQ DVNDVLDLEW DRHLEQKKRQ  
RRLIVPERET LFNTLANNRE IINQQRKR**