



TEL:4006-871-227 Web:www.ybio.net Email:shybio@126.com

RPL915Hu01 100µg

Recombinant Nei Endonuclease VIII Like Protein 1 (NEIL1)

Organism Species: Homo sapiens (Human)

Instruction manual

FOR IN VITRO USE AND RESEARCH USE ONLY

NOT FOR USE IN CLINICAL DIAGNOSTIC PROCEDURES

10th Edition (Revised in Jan, 2014)

[PROPERTIES]

Residues: Ser43~Ala314

Tags: Two N-terminal Tags, His-tag and T7-tag

Accession: Q96FI4

Host: *E. coli*

Subcellular Location: Cytoplasm, cytoskeleton, microtubule organizing center, centrosome.

Purity: >95%

Endotoxin Level: <1.0EU per 1µg (determined by the LAL method).

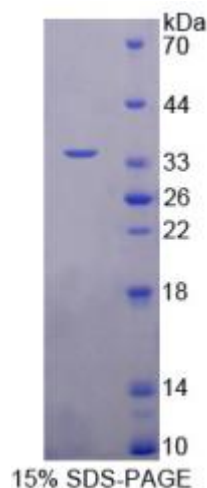
Formulation: Supplied as lyophilized form in PBS, pH7.4, containing 5% trehalose, 0.01% sarcosyl.

Predicted isoelectric point: 9.8

Predicted Molecular Mass: 34.6kDa

Applications: SDS-PAGE; WB; ELISA; IP.

(May be suitable for use in other assays to be determined by the end user.)



[USAGE]



TEL:4006-871-227

Web:www.ybio.net

Email:shybio@126.com

Reconstitute in sterile PBS, pH7.2-pH7.4.



TEL:4006-871-227 Web:www.ybio.net

Email:shybio@126.com

[STORAGE AND STABILITY]

Storage: Avoid repeated freeze/thaw cycles.

Store at 2-8°C for one month.

Aliquot and store at -80°C for 12 months.

Stability Test: The thermal stability is described by the loss rate of the target protein. The loss rate was determined by accelerated thermal degradation test, that is, incubate the protein at 37°C for 48h, and no obvious degradation and precipitation were observed. (Referring from China Biological Products Standard, which was calculated by the Arrhenius equation.) The loss of this protein is less than 5% within the expiration date under appropriate storage condition.

[SEQUENCES]

The sequence of the target protein is listed below.

**SAYRISAS ARGKELRLIL SPLPGAQPQQ EPLALVFRFG MSGSFQLVPR EELPRHAHLR
FYTAPPGPRLALCFVDIRRFGRWDLGGKWQPGRGPCVLQEYQQFRENVL R
NLADKAFDRP ICEALLDQRF FNGIGNYLRA EILYRLKIPP FEKARSVLEA LQQHRPSPEL
TLSQKIRTKL QNPDLLELCH SVPKEVVQLG GKGYGSESGE EDFAAFRAWL RCYGMPGMSS
LQDRHGRTIW FQGDGPGLAP KGRKSRKKKS KATQLSPEDR VEDA**