



TEL:4006-871-227 Web:www.ybio.net Email:shybio@126.com

YBE624Ra01 100μg

Recombinant Cyclin Dependent Kinase Inhibitor 1A (CDKN1A)

Organism Species: *Rattus norvegicus* (Rat)

*Instruction manual*

FOR IN VITRO USE AND RESEARCH USE ONLY

NOT FOR USE IN CLINICAL DIAGNOSTIC PROCEDURES

10th Edition (Revised in Jan, 2014)

## [ PROPERTIES ]

Residues: Met1~Pro164

Tags: Two N-terminal Tags, His-tag and T7-tag

Accession: Q64315

Host: *E. coli*

Subcellular Location: Nucleus. Cytoplasm.

Purity: >90%

Endotoxin Level: <1.0EU per 1μg (determined by the LAL method).

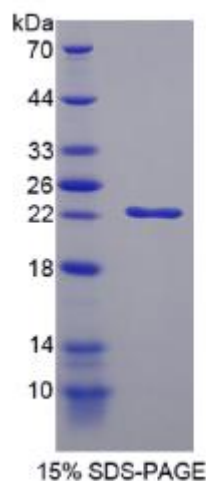
Formulation: Supplied as lyophilized form in PBS, pH7.4, containing 5% trehalose, 0.01% sarcosyl.

Predicted isoelectric point: 9.3

Predicted Molecular Mass: 22.0kDa

Applications: SDS-PAGE; WB; ELISA; IP.

(May be suitable for use in other assays to be determined by the end user.)



## [ USAGE ]



TEL:4006-871-227

Web:[www.ybio.net](http://www.ybio.net)

Email:[shybio@126.com](mailto:shybio@126.com)

**Reconstitute in sterile PBS, pH7.2-pH7.4.**



TEL:4006-871-227 Web:www.ybio.net Email:shybio@126.com

## [ STORAGE AND STABILITY ]

Storage: Avoid repeated freeze/thaw cycles.

Store at 2-8°C for one month.

Aliquot and store at -80°C for 12 months.

Stability Test: The thermal stability is described by the loss rate of the target protein. The loss rate was determined by accelerated thermal degradation test, that is, incubate the protein at 37°C for 48h, and no obvious degradation and precipitation were observed. (Referring from China Biological Products Standard, which was calculated by the Arrhenius equation.) The loss of this protein is less than 5% within the expiration date under appropriate storage condition.

## [ SEQUENCES ]

The sequence of the target protein is listed below.

MS D P G D V R P V P H R S K V C R R L F G P V D S E Q L S R D C D A L M A S C L Q E A R E R W N F  
DFATETPLEG NYVWERVRSP GLPKIYLSPG SRRRDLGGD KRPSTSSALL QGPGPAPEDH  
VALSLSCTLV SHAPERPEDS PGGTGTSQGR KRRQTSLTDF YHSKRRLVFC KRKP