



TEL:4006-871-227 Web:www.ybio.net Email:shybio@126.com

**YBA124Ra01 50μg**

**Recombinant Transforming Growth Factor Beta 1 (TGFβ1)**

**Organism Species: Rattus norvegicus  
(Rat)**

***Instruction  
manual***

FOR IN VITRO USE AND RESEARCH USE ONLY

NOT FOR USE IN CLINICAL DIAGNOSTIC PROCEDURES

11th Edition (Revised in May,  
2016)

## **[ PROPERTIES ]**

**Source:** Prokaryotic expression.

**Host:** *E. coli*

**Residues:** Ala279~Ser390

**Tags:** N-terminal His-Tag

**Tissue Specificity:** Bone.

**Subcellular Location:** Secreted, extracellular space, extracellular matrix.

**Purity:** >92%

**Traits:** Freeze-dried powder

**Buffer formulation:** PBS, pH7.4, containing 1mM DTT, 5% trehalose, 0.01% sarcosyl and Proclin300.

**Original Concentration:** 200ug/mL

**Applications:** SDS-PAGE; WB; ELISA; IP; CoIP; Purification; Amine Reactive Labeling.

(May be suitable for use in other assays to be determined by the end user.)



TEL:4006-871-227 Web:www.ybio.net Email:shybio@126.com

**Predicted isoelectric point:**

**8.4 Predicted Molecular Mass:**

14.1kDa

**Accurate Molecular Mass:** 16kDa as determined by SDS-PAGE reducing conditions.

## [ USAGE ]

Reconstitute in PBS (pH7.4) to a concentration of 0.1-1.0 mg/mL. Do not vortex.

## [ STORAGE AND STABILITY ]

**Storage:** Avoid repeated freeze/thaw cycles.

Store at 2-8°C for one month.

Aliquot and store at -80°C for 12 months.

**Stability Test:** The thermal stability is described by the loss rate. The loss rate was determined by accelerated thermal degradation test, that is, incubate the protein at 37°C for 48h, and no obvious degradation and precipitation were observed. The loss rate is less than 5% within the expiration date under appropriate storage condition.

## [ SEQUENCE ]

AL DTNYCFSSSTE KNCCVRQLYI  
DFRKDLGWKW IHEPKGYHAN FCLGPCPYIW SLDTQYSKVL ALYNQHNPQA  
SASPCCPQA LEPLPIVYV GRKPKVEQLS NMIVRSCKCS

## [ IDENTIFICATION ]

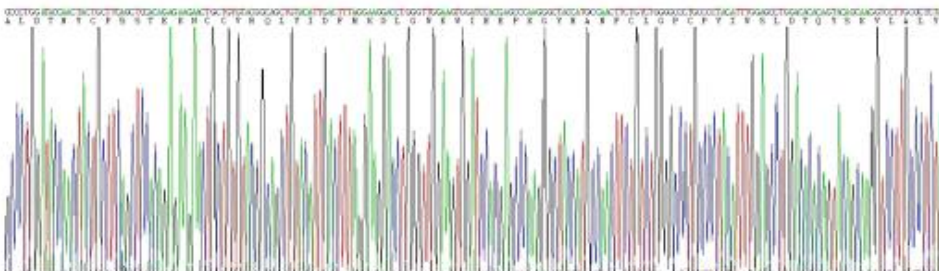


Figure 1. Gene Sequencing (Extract)

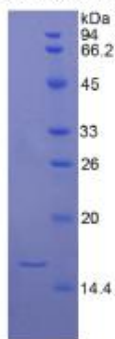


Figure 2. SDS-PAGE