



TEL:4006-871-227 Web:www.ybio.net Email:shybio@126.com

YBC348Ra01 100µg

Recombinant Butyrylcholinesterase (BCHE)

Organism Species: Rattus norvegicus (Rat)

Instruction manual

FOR IN VITRO USE AND RESEARCH USE ONLY

NOT FOR USE IN CLINICAL DIAGNOSTIC PROCEDURES

10th Edition (Revised in Jan, 2014)

[PROPERTIES]

Residues: Asn345~Phe570

Tags: Two N-terminal Tags, His-tag and T7-tag

Accession: Q9JKC1

Host: *E. coli*

Subcellular Location: Secreted.

Purity: >90%

Endotoxin Level: <1.0EU per 1µg (determined by the LAL method).

Formulation: Supplied as lyophilized form in PBS, pH7.4, containing 5% trehalose, 0.01% sarcosyl.

Predicted isoelectric point: 5.2

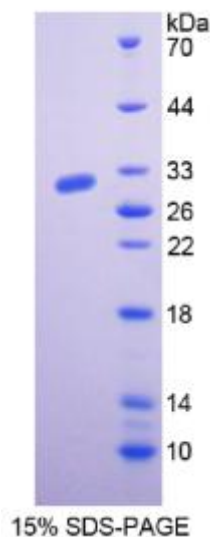
Predicted Molecular Mass: 30.2kDa

Applications: SDS-PAGE; WB; ELISA; IP.

(May be suitable for use in other assays to be determined by the end user.)

[USAGE]

Reconstitute in sterile PBS, pH7.2-pH7.4.





TEL:4006-871-227 Web:www.ybio.net Email:shybio@126.com

[STORAGE AND STABILITY]

Storage: Avoid repeated freeze/thaw cycles.

Store at 2-8°C for one month.

Aliquot and store at -80°C for 12 months.

Stability Test: The thermal stability is described by the loss rate of the target protein. The loss rate was determined by accelerated thermal degradation test, that is, incubate the protein at 37°C for 48h, and no obvious degradation and precipitation were observed. (Referring from China Biological Products Standard, which was calculated by the Arrhenius equation.) The loss of this protein is less than 5% within the expiration date under appropriate storage condition.

[SEQUENCES]

The sequence of the target protein is listed below.

**NKDEGT AFLVYGAPGF SKDNDSLITR REFQEGLNMY FPGVSSLGKE AILFYVDWL
GDQTPEVYRE AFDDIIGDYN IICPALEFTK KFAELEINAF FYYFEHRSSK LPWPEWMGVM
HGYEIEFVFG LPLERRVNYT RAEEIFRSI MKTWANFAKY GHPNGTQGNS TVWPVFTSTE
QKYLTLNTEK SKINSKLRAP QCQFWRLFFP KVLEITGDID EREQEWKAGF**