



TEL:4006-871-227 Web:www.ybio.net Email:shybio@126.com

YBA387Mu01 100μg
Recombinant Complement Component 3a (C3a)
Organism Species: Mus musculus (Mouse)
Instruction manual

FOR IN VITRO USE AND RESEARCH USE ONLY
NOT FOR USE IN CLINICAL DIAGNOSTIC PROCEDURES

9th Edition (Revised in Jul, 2013)

[PROPERTIES]

Residues: Ser671~Arg748 (Accession # P01027), with two N-terminal Tags, His-tag and GST-tag.

Host: *E. coli*

Subcellular Location: Secreted.

Purity: >95%

Endotoxin Level: <1.0EU per 1μg (determined by the LAL method).

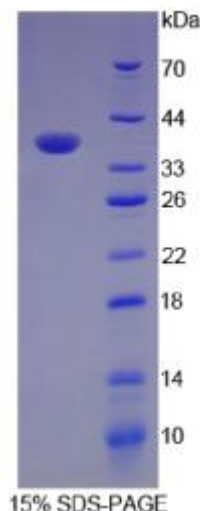
Formulation: Supplied as lyophilized form in 20mM Tris, 500mM NaCl, pH8.0, containing 1mM EDTA, 1mM DTT, 0.01% sarcosyl, 5% trehalose, and preservative.

Predicted isoelectric point: 7.6

Predicted Molecular Mass: 41.2kDa

Accurate Molecular Mass: 38kDa as determined by SDS-PAGE reducing conditions.

Applications: SDS-PAGE; WB; ELISA; IP.



The possible reasons that the actual band size differs from the predicted are as follows:

(May be suitable for use in other assays to be determined by the end user.)

Note:

1. Splice variants: Alternative splicing may create different sized proteins from the same gene.
2. Relative charge: The composition of amino acids may affects the charge of the protein.
3. Post-translational modification: Phosphorylation, glycosylation, methylation etc.



TEL:4006-871-227 Web:www.ybio.net Email:shybio@126.com

4. Post-translation cleavage: Many proteins are synthesized as pro-proteins, and then cleaved to give the active form.

5. Polymerization of the target protein: Dimerization, multimerization etc.



TEL:4006-871-227 Web:www.ybio.net

Email:shybio@126.com

[USAGE]

Reconstitute in ddH₂O.

[STORAGE AND STABILITY]

Storage: Avoid repeated freeze/thaw cycles.

Store at 2-8°C for one month.

Aliquot and store at -80°C for 12 months.

Stability Test: The thermal stability is described by the loss rate of the target protein. The loss rate was determined by accelerated thermal degradation test, that is, incubate the protein at 37°C for 48h, and no obvious degradation and precipitation were observed. (Referring from China Biological Products Standard, which was calculated by the Arrhenius equation.) The loss of this protein is less than 5% within the expiration date under appropriate storage condition.

[SEQUENCES]

The target protein is fused with two N-terminal Tags, His-tag and GST-tag, its sequence is listed below.

MSPILGYWKI KGLVQPTRL L LEYLEEKYEE HLYERDEGDK WRNKKFELGL EFPNLPYYID
GDVKLTQSMA IIRYIADKHN MLGGCPKERA EISMLEGAVL DIRYGVSRIA YSKDFETLKV
DFLSKLPEML KMFEDRLCHK TYLNGDHVTH PDFMLYDALD VVLYMDPMCL DAFPKLVCFK
KRIEAIQID KYLKSSKYIA WPLQGWWQATF GGGDHPPKSD GSTSGSGHHH HHHSAGLVPR
GSTAIGMKET AAKFERQHM DSPDLGTLEV LFQGPLGSEF-SVQLMERRMD KAGQYTDKGL
RKCCEDGMRD IPMRYSCQRR ARLITQGENC IKAFIDCCNH ITKLREQHRR DHVLGLAR

[REFERENCES]

1. Fey G.H., *et al.* (1984) Philos. Trans. R. Soc. Lond., B, Biol. Sci. 306:333-344.
2. Lundwall A., *et al.* (1984) J. Biol. Chem. 259:13851-13856.
3. Sottrup-Jensen L., *et al.* (1985) Proc. Natl. Acad. Sci. U.S.A. 82:9-13.
4. Fey G., *et al.* (1983) Springer Semin. Immunopathol. 6:119-147.