



TEL:4006-871-227 Web:www.ybio.net Email:shybio@126.com

YBC282Hu01 100μg

Recombinant Adhesion Regulating Molecule 1 (ADRM1)

Organism Species: Homo sapiens (Human)

*Instruction manual*

FOR IN VITRO USE AND RESEARCH USE ONLY

NOT FOR USE IN CLINICAL DIAGNOSTIC PROCEDURES

10th Edition (Revised in Jan, 2014)

## [ PROPERTIES ]

Residues: Thr2~Asp407

Tags: Two N-terminal Tags, His-tag and T7-tag

Accession: Q16186

Host: *E. coli*

Subcellular Location: Cytoplasm. Nucleus.

Purity: >95%

Endotoxin Level: <1.0EU per 1μg

(determined by the LAL method).

Formulation: Supplied as lyophilized form in 20mM

Tris, 500mM NaCl, pH8.0, containing 1mM EDTA, 1mM

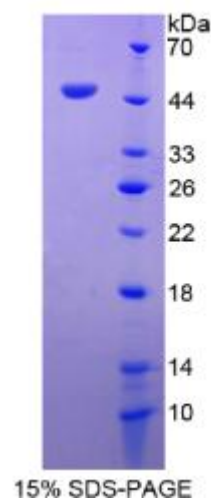
DTT, 0.01% sarcosyl, 5% trehalose, and preservative.

Predicted isoelectric point: 5.6

Predicted Molecular Mass: 45.8kDa

Applications: SDS-PAGE; WB; ELISA; IP.

(May be suitable for use in other assays to be determined by the end user.)





TEL:4006-871-227 Web:www.ybio.net Email:shybio@126.com

## [ USAGE ]

Reconstitute in ddH<sub>2</sub>O.

## [ STORAGE AND STABILITY ]

Storage: Avoid repeated freeze/thaw cycles.

Store at 2-8°C for one month.

Aliquot and store at -80°C for 12 months.

Stability Test: The thermal stability is described by the loss rate of the target protein. The loss rate was determined by accelerated thermal degradation test, that is, incubate the protein at 37°C for 48h, and no obvious degradation and precipitation were observed. (Referring from China Biological Products Standard, which was calculated by the Arrhenius equation.) The loss of this protein is less than 5% within the expiration date under appropriate storage condition.

## [ SEQUENCES ]

The sequence of the target protein is listed below.

TTSGALFPS LVPGRGASN KYLVEFRAGK MSLKGTTVTP DKRKGLVYIQ QTDDSLIHFC  
WKDRTSNGVE DDLIIFPDDC EFKRVPQCPS GRVYVLKFKK GSKRLFFWMQ EPKTDQDEEH  
C R K V N E Y L N N P P M P G A L G A S G S S G H E L S A L G G E G G L Q S L L G N M S H S Q L M Q  
LIGPAGLGGL GGLGALTGPG LASLLGSSGP PGSSSSSSSR SQSAAVTPSS TTSSTRATPA  
PSAPAAASAT SPSPAPSSGN GASTAASPTQ PIQLSDLQSI LATMNPAGP AGGQQVDLAS  
VLTPEIMAPI LANADVQERL LPYLPSGESL PQTADETQNT LTSPQFQQAL GMFSAALASG  
QLGPLMCQFG LPAAEVEAAN KGDVEAFKA MQNNAKPEQK EGDTKDKKDE EEDMSLD

## [ REFERENCES ]

1. Shimada S., *et al.* (1994) Cancer Res. 54:3831-3836.
2. Joergensen J.P., *et al.* (2006) J. Mol. Biol. 360:1043-1052.
3. Yao T., *et al.* (2006) Nat. Cell Biol. 8:994-1002.



TEL:4006-871-227 Web:www.ybio.net Email:shybio@126.com

4. Fejzo M.S., *et al.* (2008) Genes Chromosomes Cancer 47:873-883.