



TEL:4006-871-227 Web:www.ybio.net Email:shybio@126.com

**YBA413Hu01 10μg**

**Recombinant Mucin 1 (MUC1)**

**Organism Species: Homo sapiens (Human)**

*Instruction  
manual*

FOR IN VITRO USE AND RESEARCH USE ONLY

NOT FOR USE IN CLINICAL DIAGNOSTIC PROCEDURES

11th Edition (Revised in May,  
2016)

## **[ PROPERTIES ]**

**Source:** Prokaryotic expression.

**Host:** *E. coli*

**Residues:** Ser1098~Leu1255

**Tags:** N-terminal His-Tag

**Homology:** Mouse 51%, rat

46%

**Tissue Specificity:** Breast cancer, uterus.

**Subcellular Location:** Apical cell membrane; Single-pass type I  
membrane protein.

**Purity:** >95%

**Endotoxin Level:** <1.0EU per 1μg (determined by the LAL  
method). **Traits:** Freeze-dried powder

**Buffer formulation:** 20mM Tris, 150mM NaCl, pH8.0, containing 1mM  
EDTA, 1mM DTT, 0.01% sarcosyl, 5%Trehalose and Proclin300.

**Original Concentration:** 200ug/mL



TEL:4006-871-227 Web:www.ybio.net Email:shybio@126.com

**Applications:** SDS-PAGE; WB; ELISA; IP; CoIP; Reporter Assays;

Purification; Amine Reactive Labeling.

(May be suitable for use in other assays to be determined by the end user.)

**Predicted isoelectric point:**

**6.2 Predicted Molecular Mass:**

49.0kDa

**Accurate Molecular Mass:** 47kDa as determined by SDS-PAGE reducing conditions.

### [ USAGE ]

Reconstitute in 20mM Tris, 150mM NaCl (pH8.0) to a concentration of 0.1-1.0 mg/mL. Do not vortex.

### [ STORAGE AND STABILITY ]

**Storage:** Avoid repeated freeze/thaw cycles.

Store at 2-8°C for one month.

Aliquot and store at -80°C for 12 months.

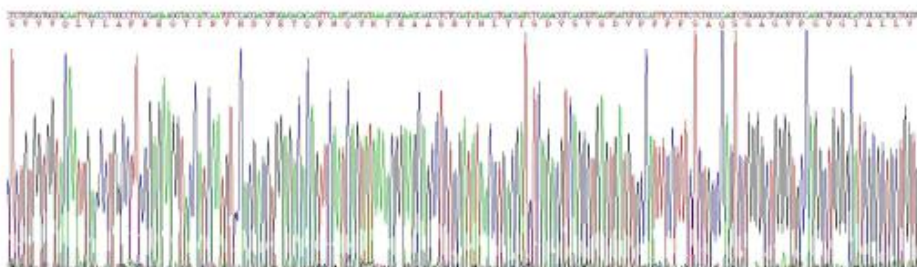
**Stability Test:** The thermal stability is described by the loss rate. The loss rate was determined by accelerated thermal degradation test, that is, incubate the protein at 37°C for 48h, and no obvious degradation and precipitation were observed. The loss rate is less than 5% within the expiration date under appropriate storage condition.

## [ SEQUENCE ]

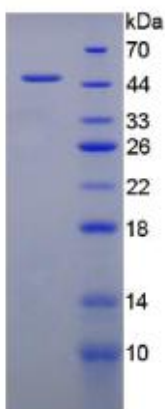
SVV

VQLTLAFREG TINVHDTVETQ FNQYKTEAAS RYNLTISDVS VSDVPFPFSA  
 QSGAGVPGWG IALLVLVCVL VALAIVYLIA LAVCQCRRKN YGQLDIFPAR  
 DTYHPMSEYP TYHTHGRYVP PSSTDSPYE KVSAGNGGSS LSYTNPAAVA  
 TSANL

## [ IDENTIFICATION ]



**Figure 1. Gene Sequencing (Extract)**





EL:4006-871-  
227 Web:www.ybio.  
net Email:shybio  
@126.com

**Figure 2. SDS-PAGE**