



TEL:4006-871-227 Web:www.ybio.net Email:shybio@126.com

YBA705Hu01 10μg

Recombinant Mucin 2 (MUC2)

Organism Species: Homo sapiens (Human)

*Instruction
manual*

FOR IN VITRO USE AND RESEARCH USE ONLY

NOT FOR USE IN CLINICAL DIAGNOSTIC PROCEDURES

11th Edition (Revised in May,
2016)

[PROPERTIES]

Source: Prokaryotic expression.

Host: *E. coli*

Residues: Cys5075~Gly5179

Tags: N-terminal His-Tag

Homology: Mouse 76%, rat

22%

Tissue Specificity: Intestine.

Subcellular Location: Secreted.

Purity: >98%

Endotoxin Level: <1.0EU per 1μg (determined by the LAL method). **Traits:** Freeze-dried powder

Buffer formulation: PBS, pH7.4, containing 1mM DTT, 5% trehalose, 0.01% sarcosyl and Proclin300.

Original Concentration: 200ug/mL



TEL:4006-871-227 Web:www.ybio.net Email:shybio@126.com

Applications: SDS-PAGE; WB; ELISA; IP; CoIP; Reporter Assays;

Purification; Amine Reactive Labeling.

(May be suitable for use in other assays to be determined by the end user.)

Predicted isoelectric point:

8.1 Predicted Molecular Mass:

12.7kDa

Accurate Molecular Mass: 15kDa as determined by SDS-PAGE reducing conditions.

Phenomenon explanation:

The possible reasons that the actual band size differs from the predicted are as follows:

1. Splice variants: Alternative splicing may create different sized proteins from the same gene.
2. Relative charge: The composition of amino acids may affects the charge of the protein.
3. Post-translational modification: Phosphorylation, glycosylation, methylation etc.
4. Post-translation cleavage: Many proteins are synthesized as pro-proteins, and then cleaved to give the active form.
5. Polymerization of the target protein: Dimerization, multimerization etc.

[USAGE]

Reconstitute in PBS (pH7.4) to a concentration of 0.1-1.0 mg/mL. Do not vortex.

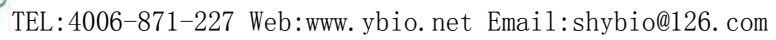
[STORAGE AND STABILITY]

Storage: Avoid repeated freeze/thaw cycles.

Store at 2-8°C for one month.

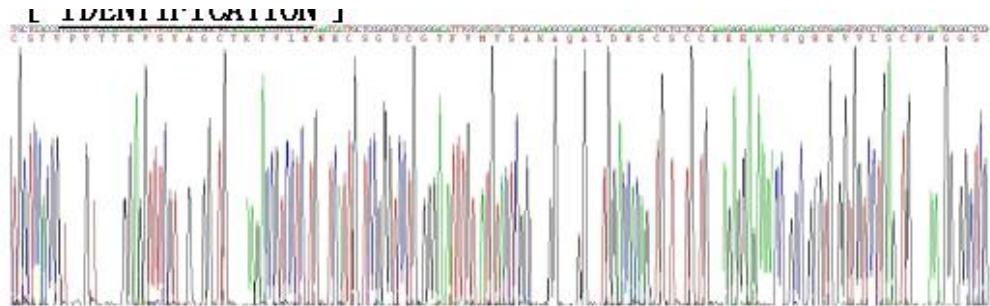
Aliquot and store at -80°C for 12 months.

Stability Test: The thermal stability is described by the loss rate. The loss rate was determined by accelerated thermal degradation test, that is, incubate the protein at 37°C for 48h, and no obvious



[SEQUENCE]

[IDENTIFICATION]





TEL:4006-871-

227 Web:www.ybio.net Email:sh
ybio@126.com

Figure 1. Gene Sequencing (Extract)

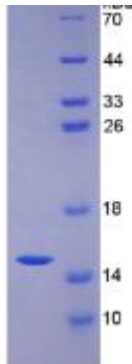


Figure 2. SDS-PAGE