



TEL:4006-871-227 Web:www.ybio.net Email:shybio@126.com

YBG277Hu01 100μg

Recombinant Proteasome 26S Subunit, ATPase 2 (PSMC2)

Organism Species: Homo sapiens (Human)

Instruction manual

FOR IN VITRO USE AND RESEARCH USE ONLY

NOT FOR USE IN CLINICAL DIAGNOSTIC PROCEDURES

9th Edition (Revised in Jul, 2013)

[PROPERTIES]

Residues: Met1~Asn433 (Accession # P35998), with two N-terminal Tags, His-tag and T7-tag.

Host: *E. coli*

Subcellular Location: Nucleus. Cytoplasm, P-body.

Purity: >95%

Endotoxin Level: <1.0EU per 1μg
(determined by the LAL method).

Formulation: Supplied as lyophilized form in PBS, pH7.4, containing 5% sucrose, 0.01% sarcosyl.

Predicted isoelectric point: 6.3

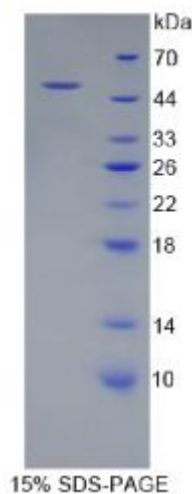
Predicted Molecular Mass: 52.5kDa

Applications: SDS-PAGE; WB; ELISA; IP.

(May be suitable for use in other assays to be determined by the end user.)

[USAGE]

Reconstitute in sterile PBS, pH7.2-pH7.4.





TEL:4006-871-227 Web:www.ybio.net

Email:shybio@126.com

[STORAGE AND STABILITY]

Storage: Avoid repeated freeze/thaw cycles.

Store at 2-8°C for one month.

Aliquot and store at -80°C for 12 months.

Stability Test: The thermal stability is described by the loss rate of the target protein. The loss rate was determined by accelerated thermal degradation test, that is, incubate the protein at 37°C for 48h, and no obvious degradation and precipitation were observed. (Referring from China Biological Products Standard, which was calculated by the Arrhenius equation.) The loss of this protein is less than 5% within the expiration date under appropriate storage condition.

[SEQUENCES]

The target protein is fused with two N-terminal Tags, His-tag and T7-tag, its sequence is listed below.

MGSSHHHHH SSGLVPRGSH MASMTGGQQM GRGSEF- MPDYLGADQR KTKEDKDDK
PIRALDEGDI ALLKTYGQST YSRQIKQVED DIQQLKKIN ELTGIKESDT GLAPPALWDL
AADKQTLQSE QPLQVARCTK IINADSEDPK YIINVKQFAK FVVDLSDQVA PTDIEEGMRV
GVDRNKYQIH IPLPPKIDPT VTMMQVEEK DVTYSDVGGC KEQIEKLREV VETPLLHPER
FVNLGIEPPK GVLLFGPPGT GKTLCARAVA NRTDACFIRV IGSELVQKYV GEGARMVREL
FEMARTKKAC LIFFDEIDAI GGARFDDGAG GDNEVQRTML ELINQLDGFD PRGNIKVLMA
TNRPDTL DPA LMRPGRLDRK IEFSLPDLEG RTHIFKIHAR SMSVERDIRF ELLARLCPNS
TGAEIRSVCT EAGMFAIRAR RKIATEKDFL EAVNKVIKSY AKFSATPRYM TYN