



TEL:4006-871-227 Web:www.ybio.net Email:shybio@126.com

**YBD102Ra01 100μg**

**Recombinant Low Density LiPoprotein Receptor Related Protein 5 (LRP5)**

**Organism Species: Rattus norvegicus (Rat)**

***Instruction manual***

**FOR IN VITRO USE AND RESEARCH USE ONLY**

**NOT FOR USE IN CLINICAL DIAGNOSTIC PROCEDURES**

10th Edition (Revised in Jan, 2014)

## **[ PROPERTIES ]**

**Residues: Ile102~Cys336**

**Tags: Two N-terminal Tags, His-tag and T7-tag**

**Accession: B2RYI1**

**Host: *E. coli***

**Purity: >95%**

**Endotoxin Level: <1.0EU per 1μg (determined by the LAL method).**

**Formulation: Supplied as lyophilized form in PBS, pH7.4, containing 5% trehalose, 0.01% sarcosyl.**

**Predicted isoelectric point: 5.4**

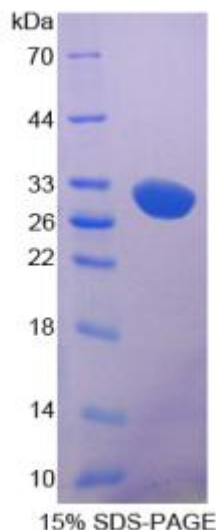
**Predicted Molecular Mass: 30.3kDa**

**Applications: SDS-PAGE; WB; ELISA; IP.**

**(May be suitable for use in other assays to be determined by the end user.)**

## **[ USAGE ]**

**Reconstitute in sterile PBS, pH7.2-pH7.4.**





TEL:4006-871-227 Web:www.ybio.net Email:shybio@126.com

## **[ STORAGE AND STABILITY ]**

**Storage: Avoid repeated freeze/thaw cycles.**

**Store at 2-8°C for one month.**

**Aliquot and store at -80°C for 12 months.**

**Stability Test:** The thermal stability is described by the loss rate of the target protein. The loss rate was determined by accelerated thermal degradation test, that is, incubate the protein at 37°C for 48h, and no obvious degradation and precipitation were observed. (Referring from China Biological Products Standard, which was calculated by the Arrhenius equation.) The loss of this protein is less than 5% within the expiration date under appropriate storage condition.

## **[ SEQUENCES ]**

**The sequence of the target protein is listed below.**

IVISGLVSP DGLACDWVGK KLYWTDSETN RIEVANLNGT SRKVLFWQDL DQPRAIALDP  
AHGYMYWTDW GEAPRIERAG MDGSTRKIIV DSDIYWPNGL TIDLEEQLY WADAKLSFIH  
RANLDGSFRQ KVVEGSLTHP FALTLSGDTL YWTDWQTRSI HACNKWTGEK RKEILSALYS  
PMDIQVLSQE RQPPFHTPCE EGNNGCShLC LLSPREPFYS CACPTGVQLQ DNGKTC