



TEL:4006-871-227 Web:www.ybio.net Email:shybio@126.com

YBJ783Hu01 100ug

Recombinant RAB1A, Member RAS Oncogene Family (RAB1A)

Organism Species: Homo sapiens (Human)

Instruction manual

FOR IN VITRO USE AND RESEARCH USE ONLY

NOT FOR USE IN CLINICAL DIAGNOSTIC PROCEDURES

10th Edition (Revised in Jan, 2014)

[PROPERTIES]

Residues: Ser2~Cys205

Tags: Two N-terminal Tags, His-tag and T7-tag

Accession: P62820

Host: *E. coli*

Subcellular Location: Golgi apparatus.

Endoplasmic reticulum. Early endosome.

Purity: >95%

Endotoxin Level: <1.0EU per 1µg (determined by the LAL method).

Formulation: Supplied as lyophilized form in 20mM

Tris, 150mM NaCl, pH8.0, containing 1mM EDTA, 1mM

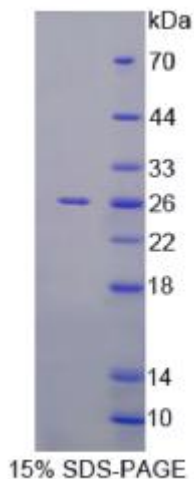
DTT, 0.01% sarcosyl, 5% trehalose, and preservative.

Predicted isoelectric point: 5.9

Predicted Molecular Mass: 26.2kDa

Applications: SDS-PAGE; WB; ELISA; IP.

(May be suitable for use in other assays to be determined by the end user.)



[USAGE]

Reconstitute in sterile ddH₂O.



TEL:4006-871-227 Web:www.ybio.net

Email:shybio@126.com

[STORAGE AND STABILITY]

Storage: Avoid repeated freeze/thaw cycles.

Store at 2-8°C for one month.

Aliquot and store at -80°C for 12 months.

Stability Test: The thermal stability is described by the loss rate of the target protein. The loss rate was determined by accelerated thermal degradation test, that is, incubate the protein at 37°C for 48h, and no obvious degradation and precipitation were observed. (Referring from China Biological Products Standard, which was calculated by the Arrhenius equation.) The loss of this protein is less than 5% within the expiration date under appropriate storage condition.

[SEQUENCES]

The sequence of the target protein is listed below.

**SSMNPEYDY LFKLLIGDS GVGKSCLLLR FADDTYTESY ISTIGVDFKI RTIELDGKTI
KLQIWDTAGQ ERFRTITSSY YRGAGHIIVV YDVTDQESFN NVKQWLQEID RYASENVNKL
LVGNKCDLTT KKVVDYTTAK EFADSLGIPF LETSAKNATN VEQSFMTMAA EIKKRMGPGA
TAGGAEKSNV KIQSTPVKQS GGGCC**