



TEL:4006-871-227 Web:www.ybio.net Email:shybio@126.com

**YB90839Mu01**

**10μg**

**Thyrotropin Releasing Hormone (TRH)**

**Organism: Mus musculus (Mouse)**

***Instruction manual***

FOR IN VITRO USE AND RESEARCH USE ONLY

NOT FOR USE IN CLINICAL DIAGNOSTIC PROCEDURES

6th Edition (Revised in March, 2013)

## **[ PROPERTIES ]**

**Residues:** Glu27~Glu256 (Accession # Q62361), with two N-terminal Tags, His-tag and GST-tag.

**Host:** *E. coli*

**Subcellular Location:** Secreted.

**Purity:** >95%

**Endotoxin Level:** <1.0EU per 1μg (determined by the LAL method).

**Formulation:** Supplied as lyophilized form in PBS, pH7.4, containing 5% sucrose, 0.01% sarcosyl.

**Predicted isoelectric point:** 6.0

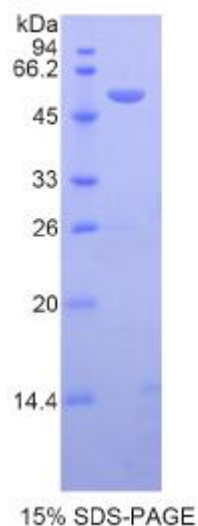
**Predicted Molecular Mass:** 53.4kDa

**Applications:** SDS-PAGE; WB; ELISA; IP.

(May be suitable for use in other assays to be determined by the end user.)

## **[ USAGE ]**

Reconstitute in sterile PBS, pH7.2-pH7.4.





TEL:4006-871-227 Web:www.ybio.net Email:shybio@126.com

## [ STORAGE AND STABILITY ]

**Storage: Avoid repeated freeze/thaw cycles.**

Store at 2-8°C for one month.

Aliquot and store at -80°C for 12 months.

**Stability Test:** The thermal stability is described by the loss rate of the target protein. The loss rate was determined by accelerated thermal degradation test, that is, incubate the protein at 37°C for 48h, and no obvious degradation and precipitation were observed. (Referring from China Biological Products Standard, which was calculated by the Arrhenius equation.) The loss of this protein is less than 5% within the expiration date under appropriate storage condition.

## [ SEQUENCES ]

The target protein is fused with two N-terminal Tags, His-tag and GST-tag, its sequence is listed below.

MRNKKFELGL EFPNLPYYID GDVKLTQSMA IIRYADKHN MLGGCPKERA EISMLEGAVL  
DIRYGVSRIA YSKDFETLKV DFLSKLPEML KMFEDRLCHK TYLNGDHVTH PDFMLYDALD  
VVLYMDPMCL DAFPKLVCFK KRIEAIQID KYLKSSKYIA WPLQGWQATF GGGDHPPKSD  
GSTSGSGHHH HHHSAGLVPR GSTAIGMKET AAKFERQHM DSPDLGTLEV LFQ  
GPLGSEF- EAAQEEG AVTPDLP GLEKVQVRPERRFLRKDLQ RVRGDLGAALD  
SWITKRQH PGKREEKEEDVEAEERGDLGEVGAWRPHKRQH PGRRANQDKD  
SWSDEGDSDWLP PSWLPDFFLD SWFSDAPQVKRQH PGRRSFPWMESDVTK  
RQH PGRRFIDPELQRSWEETEGEEGGLMPEKRQH PGKRAVGHP CGPQGIC  
GQTGLLQLLG DLSRGQETLA KQTPQLEAWV REPLEE

## [ REFERENCES ]

1. Nakajima Y., *et al.* (2012) PLoS ONE 7:e40437-e40437.
2. Zhang X., van den Pol A.N. (2012) J. Neurosci. 32:3032-3043.
3. Tomas-Roca L., *et al.* (2011) Int. J. Dev. Neurosci. 29:451-460.
4. Diez-Roux G., *et al.* (2011) PLoS Biol. 9:e1000582-e1000582.