



TEL:4006-871-227 Web:www.ybio.net Email:shybio@126.com

YB91644Hu02

Interleukin 17 Receptor A (IL17RA)

Organism: Homo sapiens (Human)

Instruction manual

FOR IN VITRO USE AND RESEARCH USE ONLY  
NOT FOR USE IN CLINICAL DIAGNOSTIC PROCEDURES

5th Edition  
(Revised in  
January,  
2013)

Human IL17RA

### [ DESCRIPTION ]

Protein Names: Interleukin 17 Receptor A

Synonyms: IL17RA, IL17R

Species: Human

Size: 100g

Source: Escherichia coli-derived

Subcellular Location: Membrane; Single-pass type I membrane protein.

### [ PROPERTIES ]

Residues: Pro377~Phe534 (Accession # Q96F46), with N-terminal His-Tag.

Grade & Purity: >95%, 22kDa as determined by SDS-PAGE reducing conditions.

Formulation: Supplied as lyophilized form in PBS, pH 7.4, containing 5% sucrose, 0.01% sarcosyl.

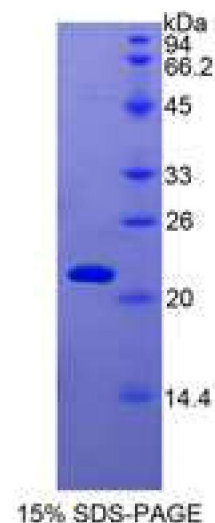
Endotoxin Level: <1.0 EU per 1μg (determined by the LAL method).

Applications: SDS-PAGE; WB; ELISA; IP.

(May be suitable for use in other assays to be determined by the end user.)

Predicted Molecular Mass: 19.3kDa

Predicted isoelectric point: 6.2





TEL:4006-871-227 Web:www.ybio.net

Email:shybio@126.com

### [ PREPARATION ]

Reconstitute in sterile PBS, pH7.2-pH7.4.

### [ STORAGE AND STABILITY ]

Storage: Avoid repeated freeze/thaw cycles.

Store at 2-8°C for one month.

Aliquot and store at -80°C for 12 months.

Stability Test: The thermal stability is described by the loss rate of the target protein. The loss rate was determined by accelerated thermal degradation test, that is, incubate the protein at 37°C for 48h, and no obvious degradation and precipitation were observed. (Referring from China Biological Products Standard, which was calculated by the Arrhenius equation.) The loss of this protein is less than 5% within the expiration date under appropriate storage condition.

### [ SEQUENCES ]

The target protein is fused with N-terminal His-Tag, its sequence is listed below.

MGHHHHHSGSEF-PRKV WIIYSADHPL YVDVVLKFAQ FLLTACGTEV ALDLLEEQAI  
SEAGVMTWVG RQKQEMVESN SKIIVLCSRG TRAKWQALLG RGAPVRLRCD  
HGKPVGDLFT AAMNMILPDF KRPACFGTYV VCYFSEVSCD GDVPDLFGAA PRYPLMDRFE  
EVYF