



TEL:4006-871-227 Web:www.ybio.net Email:shybio@126.com

**YBB949Ra01 10μg**

**Recombinant Transforming Growth Factor Beta 3 (TGFβ3)**

**Organism Species: Rattus norvegicus  
(Rat)**

*Instruction  
manual*

FOR IN VITRO USE AND RESEARCH USE ONLY

NOT FOR USE IN CLINICAL DIAGNOSTIC PROCEDURES

11th Edition (Revised in May,  
2016)

## **[ PROPERTIES ]**

**Source:** Prokaryotic expression.

**Host:** *E. coli*

**Residues:** Ala301~Ser412

**Tags:** N-terminal His-Tag

**Tissue Specificity:** Brain, Heart, Pancreas, Kidney.

**Subcellular Location:** Secreted.

**Purity:** >92%

**Traits:** Freeze-dried powder

**Buffer formulation:** 20mM Tris, 150mM NaCl, pH8.0, containing 1mM EDTA, 1mM DTT, 0.01% sarcosyl, 5%Trehalose and Proclin300.

**Original Concentration:** 200ug/mL

**Applications:** SDS-PAGE; WB; ELISA; IP; CoIP; Reporter Assays;

Purification; Amine Reactive Labeling.

(May be suitable for use in other assays to be determined by the end user.)



TEL:4006-871-227 Web:www.ybio.net Email:shybio@126.com

**Predicted isoelectric point:**

**6.4 Predicted Molecular Mass:**

14.3kDa

**Accurate Molecular Mass:** 16kDa as determined by SDS-PAGE reducing conditions.

## [ USAGE ]

Reconstitute in 20mM Tris, 150mM NaCl (pH8.0) to a concentration of 0.1-1.0 mg/mL. Do not vortex.

## [ STORAGE AND STABILITY ]

**Storage:** Avoid repeated freeze/thaw cycles.

Store at 2-8°C for one month.

Aliquot and store at -80°C for 12 months.

**Stability Test:** The thermal stability is described by the loss rate. The loss rate was determined by accelerated thermal degradation test, that is, incubate the protein at 37°C for 48h, and no obvious degradation and precipitation were observed. The loss rate is less than 5% within the expiration date under appropriate storage condition.

## [ SEQUENCE ]

ALDTNYCFRN LEENCCVRPL YIDFRQDLGW KWHHEPKGY ANFCSGPCPY  
 LRSADTTHST VLGLYNTLNP EASASPCCVP QDLEPLTILY YVGRTPKVEQ  
 LSMNVVKSCK CS

## [ IDENTIFICATION ]

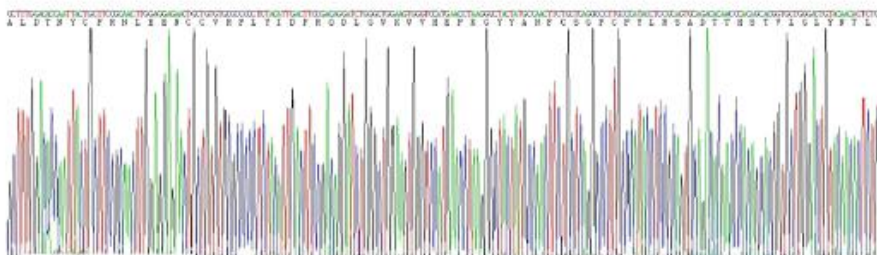
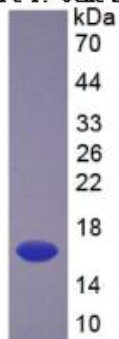


Figure 1. Gene Sequencing (Extract)



SA

Figure 2. SDS-PAGE