



TEL:4006-871-227 Web:www.ybio.net Email:shybio@126.com

YBA139Ra01 50μg

Recombinant Tumor Necrosis Factor Related Apoptosis Inducing Ligand (TRAIL)

Organism Species: Rattus norvegicus (Rat)

Instruction manual

FOR IN VITRO USE AND RESEARCH USE ONLY

NOT FOR USE IN CLINICAL DIAGNOSTIC PROCEDURES

11th Edition (Revised in May, 2016)

[PROPERTIES]

Source: Prokaryotic expression.

Host: *E. coli*

Residues: Pro115~Ala287

Tags: Two N-terminal Tags, His-tag and GST-tag

Subcellular Location: Membrane; Single-pass type II membrane protein.

Purity: >98%

Traits: Freeze-dried powder

Buffer formulation: PBS, pH7.4, containing 1mM DTT, 5% trehalose, 0.01% sarcosyl and Proclin300.

Original Concentration: 200ug/mL

Applications: SDS-PAGE; WB; ELISA; IP; CoIP; Reporter Assays;

Purification; Amine Reactive Labeling.

(May be suitable for use in other assays to be determined by the end user.)

Predicted isoelectric point: 7.3

Predicted Molecular Mass: 53.0kDa

Accurate Molecular Mass: 46kDa as determined by SDS-PAGE reducing conditions.

Phenomenon explanation:



TEL:4006-871-227 Web:www.ybio.net Email:shybio@126.com

The possible reasons that the actual band size differs from the predicted are as follows:

1. Splice variants: Alternative splicing may create different sized proteins from the same gene.
2. Relative charge: The composition of amino acids may affects the charge of the protein.



TEL:4006-871-227 Web:www.ybio.net

Email:shybio@126.com

3. Post-translational modification: Phosphorylation, glycosylation, methylation etc.
4. Post-translation cleavage: Many proteins are synthesized as pro-proteins, and then cleaved to give the active form.
5. Polymerization of the target protein: Dimerization, multimerization etc.

[USAGE]

Reconstitute in PBS (pH7.4) to a concentration of 0.1–1.0 mg/mL. Do not vortex.

[STORAGE AND STABILITY]

Storage: Avoid repeated freeze/thaw cycles.

Store at 2–8°C for one month.

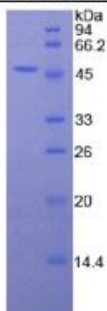
Aliquot and store at –80°C for 12 months.

Stability Test: The thermal stability is described by the loss rate. The loss rate was determined by accelerated thermal degradation test, that is, incubate the protein at 37°C for 48h, and no obvious degradation and precipitation were observed. The loss rate is less than 5% within the expiration date under appropriate storage condition.

[SEQUENCE]

PPLPRG RRPQRVAARI TGITRRSNLA LIPISKDGKT
LGQKIETWES SRRGHSFLNH VHLRNGELVI QEEGLYYIYS QTYRFEAK
EASKTVSKDG GRIKQMVQYI YKYTSYPDPI LLMKSARNSC WSREAEGLY
SIYQGGLFEL KENDRIFVSV TNEHMLDLH EASFFGA

[IDENTIFICATION]





TEL:4006-871-227

Web:www.ybio.net

Email:shybio@126.com