



TEL:4006-871-227 Web:www.ybio.net Email:shybio@126.com

YBD180Mu01 100μg

Recombinant Nucleobindin 2 (NUCB2)

Organism Species: Mus musculus (Mouse)

Instruction manual

FOR IN VITRO USE AND RESEARCH USE ONLY

NOT FOR USE IN CLINICAL DIAGNOSTIC PROCEDURES

9th Edition (Revised in Jul, 2013)

[PROPERTIES]

Residues: Val25~Thr420 (Accession # P81117), with two N-terminal Tags, His-tag and T7-tag.

Host: *E. coli*

Subcellular Location: Cytoplasm. Perikaryon.

Endoplasmic reticulum. Golgi apparatus. Nucleus envelope. Membrane; Peripheral membrane protein.

Secreted.

Purity: >95%

Endotoxin Level: <1.0EU per 1μg (determined by the LAL method).

Formulation: Supplied as lyophilized form in PBS, pH7.4, containing 5% trehalose, 0.01% sarcosyl.

Predicted isoelectric point: 5.3

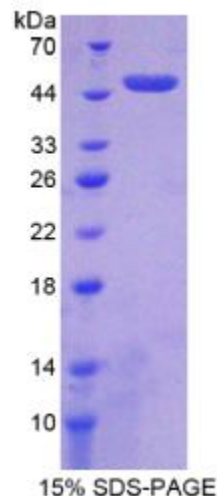
Predicted Molecular Mass: 51.0kDa

Applications: SDS-PAGE; WB; ELISA; IP.

(May be suitable for use in other assays to be determined by the end user.)

[USAGE]

Reconstitute in sterile PBS, pH7.2-pH7.4.





[STORAGE AND STABILITY]

Storage: Avoid repeated freeze/thaw cycles.

Store at 2-8°C for one month.

Aliquot and store at -80°C for 12 months.

Stability Test: The thermal stability is described by the loss rate of the target protein. The loss rate was determined by accelerated thermal degradation test, that is, incubate the protein at 37°C for 48h, and no obvious degradation and precipitation were observed. (Referring from China Biological Products Standard, which was calculated by the Arrhenius equation.) The loss of this protein is less than 5% within the expiration date under appropriate storage condition.

[SEQUENCES]

The target protein is fused with two N-terminal Tags, His-tag and T7-tag, its sequence is listed below.

MG S SH H HH H H SS GLV PR G SH MA SMT GG Q Q M GR G S- VPI DV D KTK VH N TE PV
ENARIEPPDT GLYYDEYLKQ VIEVLETDPH FREKLQKADI EEIRSGRLSQ ELDLVSHKVR
TRLDELKRQE VGRRLMLIKA KLDALQDTGM NHHLLLKQFE HLNHQNPNTF ESRDLMLIK
AATADLEQYD RTRHEEFKKY EMMKEHERRE YLKTLSSEKR KEEESKFEEM KRKHEDHPKV
NHPGSKDQLK EVWEETDGLD PNDFDPKTFF KLHDVNNDGF LDEQEALF TRELEKVYNP
QNAEDDMIEM EEERLRMREH VMSEIDNNKD RLVTL EEFLR ATEKKEFLEP DSWETLDQQQ
LFTEDELKEY ESIIAQENE LKKRAEELQK QKEDLQRQHD HLEAQKQEYH QAVQHLEQKK
LQQGIAPSGP AGELKFEPHT