



TEL:4006-871-227 Web:www.ybio.net Email:shybio@126.com

**YBC564Mu01 50μg**

**Recombinant Legumain (LGMN)**

**Organism Species: Mus musculus (Mouse)**

*Instruction  
manual*

FOR IN VITRO USE AND RESEARCH USE ONLY

NOT FOR USE IN CLINICAL DIAGNOSTIC PROCEDURES

11th Edition (Revised in May,  
2016)

## [ PROPERTIES ]

**Source:** Prokaryotic expression.

**Host:** *E. coli*

**Residues:** Val18~Tyr435

**Tags:** N-terminal His-Tag

**Subcellular Location:** Lysosome.

**Purity:** >98%

**Traits:** Freeze-dried powder

**Buffer formulation:** 20mM Tris, 150mM NaCl, pH8.0, containing 1mM

EDTA, 1mM DTT, 0.01% sarcosyl, 5%Trehalose and Proclin300.

**Original Concentration:** 200ug/mL

**Applications:** SDS-PAGE; WB; ELISA; IP; CoIP; Reporter Assays;

Purification; Amine Reactive Labeling.

(May be suitable for use in other assays to be determined by the end user.)

**Predicted isoelectric point:**

**5.9 Predicted Molecular Mass:**

51.3kDa



TEL:4006-871-227 Web:www.ybio.net Email:shybio@126.com

**Accurate Molecular Mass:** 51kDa as determined by SDS-PAGE reducing conditions.

## [ USAGE ]

Reconstitute in 20mM Tris, 150mM NaCl (pH8.0) to a concentration of 0.1-1.0 mg/mL. Do not vortex.

## [ STORAGE AND STABILITY ]

**Storage:** Avoid repeated freeze/thaw cycles.

Store at 2-8°C for one month.

Aliquot and store at -80°C for 12 months.

**Stability Test:** The thermal stability is described by the loss rate. The loss rate was determined by accelerated thermal degradation test, that is, incubate the protein at 37°C for 48h, and no obvious degradation and precipitation were observed. The loss rate is less than 5% within the expiration date under appropriate storage condition.

## [ SEQUENCE ]

SEQUENCE      V F V   Q V D D F L D G R   T M V V I V A G S N   Q W T N T A T Q A D  
ACHAYQIIHR NGIPDEQIIV MMYDDIANSE ENPTPGVVIN RPNGTDVYKG  
VLKDYTGEDV TPENFLAVLR GDAEAVKGKG SGKVLKSGPR DHVFIYFTDH  
GATGILVFPN DDLHVKDLNK TIRYMYEHKM YQKMVFYIEA CESGSMNNHL  
PDDINVYATT AANPKESSYA CYYDEERGTY LGDWYSVNWV EDSVDVLTG  
ETLHKQYHLV KSHTNTSHVM QYGNKSISTM KVMQFQGMKH RASSPISLPP  
VTHLDLTPSP DVPLTILKRK LLRTNDVKES QNLIGQIQQF LDARHVIEKS  
VHKIVSLLAG FGETAERHLS ERTMLTAHDC YQEAVTHFRT HCFNWHSVTY  
EHALRYLYVL ANLCEAPYPI DRIEMAMDKV CLSHY

## [ IDENTIFICATION ]

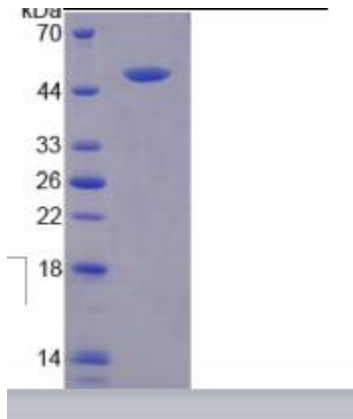


Figure 1. SDS-PAGE