



TEL:4006-871-227 Web:www.ybio.net Email:shybio@126.com

**YB90706Hu
01**

Visceral Adipose Tissue Derived Serine Protease Inhibitor (Vaspin)
Organism: Homo sapiens (Human)

***Instruction
manual***

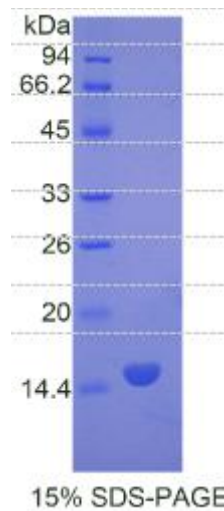
FOR IN VITRO USE AND RESEARCH USE ONLY
NOT FOR USE IN CLINICAL DIAGNOSTIC PROCEDURES

5th Edition (Revised in January, 2013)

[DESCRIPTION]

Protein Names: Visceral Adipose Tissue Derived

Human Vaspin



Serine Protease Inhibitor

Synonyms: Vaspin, SERPINA12

Species: Human

Size: 100μg

Source: *Escherichia coli*-derived

Subcellular Location: Secreted.



TEL:4006-871-227 Web:www.ybio.net Email:shybio@126.com

[PROPERTIES]

Residues: Asn52~Arg143 (Accession #

Q8IW75), with N-terminal His-Tag.

Grade & Purity: >95%, 15kDa as determined

by SDS-PAGE reducing conditions.

Formulation: Supplied as lyophilized form in

PBS, pH 7.4, containing 5% sucrose, 0.01%

sarcosyl.

Endotoxin Level: <1.0 EU per 1μg

(determined by the LAL method).

Applications: SDS-PAGE; WB; ELISA; IP.

(May be suitable for use in other assays to be determined by the end user.)

Predicted Molecular Mass: 12.1kDa

Predicted isoelectric point: 7.1

[PREPARATION]

Reconstitute in sterile PBS, pH7.2-pH7.4.

[STORAGE AND STABILITY]

Storage: Avoid repeated freeze/thaw cycles.

Store at 2-8°C for one month.

Aliquot and store at -80°C for 12 months.

Stability Test: The thermal stability is described by the loss rate of the target protein. The loss rate was determined by accelerated thermal degradation test, that is, incubate the protein at 37°C for 48h, and no obvious degradation and precipitation were observed. (Referring from China Biological Products Standard, which was calculated by the Arrhenius equation.) The loss of this protein is less than 5% within the expiration date under appropriate storage condition.

[SEQUENCES]

The target protein is fused with N-terminal His-Tag, its sequence is listed below.

MGHHHHHSGSEF- NMDLGFKLL KKLAFFYNPGR NIFLSPLSIS TAFSMLCLGA
QDSTLDEIKQ GFNFRKMPEK DLHEGFHYII HELTQKTQDL KLSIGNTLFI DQR