



TEL:4006-871-227 Web:www.ybio.net Email:shybio@126.com

**YBL504Hu01 Polyclonal Antibody to Endoplasmic Reticulum Lipid Raft
Associated Protein 2 (ERLIN2)**

Organism Species: Homo sapiens (Human)

Instruction manual

**FOR IN VITRO USE AND RESEARCH USE ONLY
NOT FOR USE IN CLINICAL DIAGNOSTIC PROCEDURES**

10th Edition (Revised in Jan, 2014)

[PRODUCT INFORMATION]

Immunogen: ERLIN2, Human

Purification: Affinity Chromatography.

Clonality: Polyclonal

Applications: WB, ICC, IHC-P, IHC-F, ELISA

Host: Rabbit

Concentration: 200µg/mL

Immunoglobulin Type: IgG

UOM: 100µg

[IMMUNOGEN INFORMATION]

**Immunogen: Recombinant ERLIN2 (Pro47~Asn339) with two N-terminal
Tags, His-tag and T7-tag expressed in *E.coli*.**

Accession No.: RPL504Hu01

[ANTIBODY SPECIFICITY]

**The antibody is a rabbit polyclonal antibody raised against ERLIN2. It has
been selected for its ability to recognize ERLIN2 in immunohistochemical
staining and western blotting.**

[APPLICATIONS]

Western blotting: 1:50-400

Immunocytochemistry in formalin fixed cells: 1:50-500

Immunohistochemistry in formalin fixed frozen section: 1:50-500

Immunohistochemistry in paraffin section: 1:10-100

Enzyme-linked Immunosorbent Assay: 1:100-200

Optimal working dilutions must be determined by end user.



TEL:4006-871-227 Web:www.ybio.net Email:shybio@126.com

[CONTENTS]

Form & Buffer: Supplied as solution form in PBS, pH7.4, containing 0.02% NaN₃, 50% glycerol.

[QUALITY CONTROL]

Content: The quality control contains recombinant ERLIN2 (Pro47~Asn339) disposed in loading buffer.

Usage: 10uL per well when 3,3'-Diaminobenzidine(DAB) as the substrate.

5uL per well when used in enhanced chemiluminescent (ECL).

Note: The quality control is specifically manufactured as the positive control. Not used for other purposes.

Loading Buffer: 100mM Tris(pH8.8), 2% SDS, 200mM NaCl, 50% glycerol, BPB 0.01%, NaN₃ 0.02%.

[STORAGE]

Store at 4°C for frequent use. Stored at -20°C to -80°C in a manual defrost freezer for one year without detectable loss of activity. Avoid repeated freeze-thaw cycles.

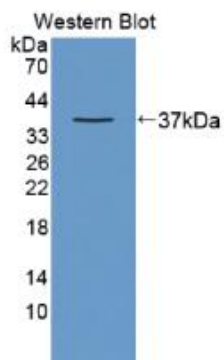
[IMAGES]



TEL:4006-871-227 Web:www.ybio.net Email:shybio@126.com

Store at 4°C for frequent use. Stored at -20°C to -80°C in a manual defrost freezer for one year without detectable loss of activity. Avoid repeated freeze-thaw cycles.

[IMAGES]



Used in Western Blot, Sample:
Recombinant ERLIN2, Human