



TEL:4006-871-227 Web:www.ybio.net Email:shybio@126.com

YBA539Hu01 10μg

Recombinant Myelin Basic Protein (MBP)

Organism Species: Homo sapiens (Human)

***Instruction
manual***

FOR IN VITRO USE AND RESEARCH USE ONLY

NOT FOR USE IN CLINICAL DIAGNOSTIC PROCEDURES

11th Edition (Revised in May,
2016)

[PROPERTIES]

Figure 1 SDS-PAGE

Source: Prokaryotic expression.

Host: *E. coli*

Residues: Val220~Met301

Tags: Two N-terminal Tags, His-tag and GST-tag

Tissue Specificity: Spleen, Lung, Skin.

Subcellular Location: Myelin membrane; Peripheral membrane
protein; Cytoplasmic side.

Purity: >98%

Traits: Freeze-dried powder

Buffer formulation: PBS, pH7.4, containing 1mM DTT, 5% trehalose,
0.01% sarcosyl and Proclin300.

Original Concentration: 200ug/mL

Applications: SDS-PAGE; WB; ELISA; IP; CoIP; Purification; Amine
Reactive Labeling.

(May be suitable for use in other assays to be determined by the end
user.)



TEL:4006-871-227 Web:www.ybio.net Email:shybio@126.com

Predicted isoelectric point:

9.1 Predicted Molecular Mass:

38.8kDa

Accurate Molecular Mass: 39kDa as determined by SDS-PAGE reducing conditions.

[USAGE]

Reconstitute in PBS (pH7.4) to a concentration of 0.1-1.0 mg/mL. Do not vortex.

[STORAGE AND STABILITY]

Storage: Avoid repeated freeze/thaw cycles.

Store at 2-8°C for one month.

Aliquot and store at -80°C for 12 months.

Stability Test: The thermal stability is described by the loss rate. The loss rate was determined by accelerated thermal degradation test, that is, incubate the protein at 37°C for 48h, and no obvious degradation and precipitation were observed. The loss rate is less than 5% within the expiration date under appropriate storage condition.

[SEQUENCE]

V VHFFKNIVTP RTPPPSQGKG RGLSLSRFSW
GAEGQRPFG YGGRASDYKS AHKGFKGVDA QGTLSKIFKL GGRDSRSGSP
M

[IDENTIFICATION]

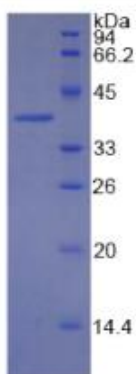


Figure 1 SDS-PAGE