



TEL:4006-871-227 Web:www.ybio.net Email:shybio@126.com

YBH069Hu01 100 μ g

Recombinant Synaptotagmin Like Protein 2 (SYTL2)

Organism Species: Homo sapiens (Human)

Instruction manual

FOR IN VITRO USE AND RESEARCH USE ONLY

NOT FOR USE IN CLINICAL DIAGNOSTIC PROCEDURES

10th Edition (Revised in Jan, 2014)

[PROPERTIES]

Residues: Lys329~Leu880

Tags: Two N-terminal Tags, His-tag and T7-tag

Accession: Q9HCH5

Host: *E. coli*

Subcellular Location: Cytoplasm. Cell membrane.

Purity: >90%

Endotoxin Level: <1.0EU per 1 μ g (determined by the LAL method).

Formulation: Supplied as lyophilized form in PBS,

pH7.4, containing 5% trehalose, 0.01% sarcosyl.

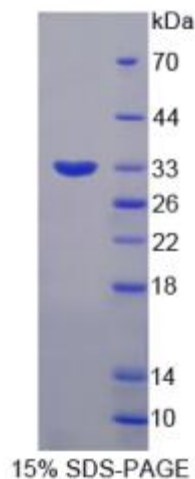
Predicted isoelectric point: 9.5

Predicted Molecular Mass: 33.0kDa

Applications: SDS-PAGE; WB; ELISA; IP.

(May be suitable for use in other assays to be determined by the end user.)

[USAGE]





TEL:4006-871-227 Web:www.ybio.net Email:shybio@126.com

Reconstitute in sterile PBS, pH7.2-pH7.4.

[STORAGE AND STABILITY]

Storage: Avoid repeated freeze/thaw cycles.

Store at 2-8°C for one month.

Aliquot and store at -80°C for 12 months.

Stability Test: The thermal stability is described by the loss rate of the target protein. The loss rate was determined by accelerated thermal degradation test, that is, incubate the protein at 37°C for 48h, and no obvious degradation and precipitation were observed. (Referring from China Biological Products Standard, which was calculated by the Arrhenius equation.) The loss of this protein is less than 5% within the expiration date under appropriate storage condition.

[SEQUENCES]

The sequence of the target protein is listed below.

KG NI Q FA I E Y V E SL K E L H V F VA QC K D L A A A D V KK Q R S D P Y V K AY L L P D K G K
M

GKKKTLVVKK TLNPVYNEIL RYKIEKQILK TQKLNL SIWH RDTFKRNSFL GEVELDLETW

DWDNKQNKQL RWPYPLKRKTA PVALEAENRG EMKLALQYVP EPVPGKKLPT TGEVHIWVKE

CLDLPLLRGS HLNSFVKCTI LPDTSRKSQR KTRAVGKTTN PIFNHTMVYD GFRPEDLMEA

CVELTVWDHY KLTNQFLGGL