



TEL:4006-871-227 Web:www.ybio.net Email:shybio@126.com

YBE217Hu01 100μg

Recombinant Serine Hydroxymethyltransferase 2, Mitochondrial (SHMT2)

Organism Species: Homo sapiens (Human)

*Instruction
manual*

FOR IN VITRO USE AND RESEARCH USE ONLY

NOT FOR USE IN CLINICAL DIAGNOSTIC PROCEDURES

10th Edition (Revised in Jan,
2014)

[PROPERTIES]

Residues: Asn30~His504

Tags: Two N-terminal Tags, His-tag and T7-tag

Accession: P34897

Host: *E. coli*

Subcellular Location: Mitochondrion.

Mitochondrion matrix, mitochondrion nucleoid.

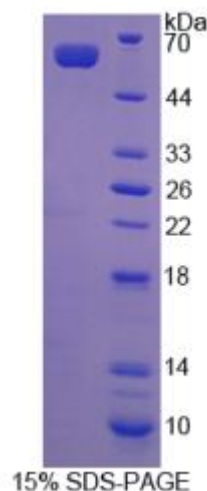
Mitochondrion inner membrane.

Purity: >95%

Endotoxin Level: <1.0EU per 1μg (determined by the
LAL method).

Formulation: Supplied as lyophilized form in

PBS, pH7.4, containing 5% trehalose, 0.01%



The possible reasons that the actual band size differs from the predicted are as follows:
sarcosyl.

Predicted isoelectric point:

8.1 Predicted Molecular Mass:

56.3kDa



TEL:4006-871-227 Web:www.ybio.net Email:shybio@126.com

Accurate Molecular Mass: 60kDa as determined by SDS-PAGE reducing conditions. Applications: SDS-PAGE; WB; ELISA; IP.

(May be suitable for use in other assays to be determined by the end user.)

Note:

1. Splice variants: Alternative splicing may create different sized proteins from the same gene.
2. Relative charge: The composition of amino acids may affects the charge of the protein.
3. Post-translational modification: Phosphorylation, glycosylation, methylation etc.
4. Post-translation cleavage: Many proteins are synthesized as pro-proteins, and then cleaved to give the active form.
5. Polymerization of the target protein: Dimerization, multimerization etc.

[USAGE]

Reconstitute in sterile PBS, pH7.2-pH7.4.

[STORAGE AND STABILITY]

Storage: Avoid repeated freeze/thaw cycles.

Store at 2-8°C for one month.

Aliquot and store at -80°C for 12 months.

Stability Test: The thermal stability is described by the loss rate of the target protein. The loss rate was determined by accelerated thermal degradation test, that is, incubate the protein at 37°C for 48h, and no obvious degradation and precipitation were observed. (Referring from China Biological Products Standard, which was calculated by the Arrhenius equation.) The loss of this protein is less than 5% within the expiration date under appropriate storage condition.

[SEQUENCES]

The sequence of the target protein is listed below.

N AA Q T Q TG E A N RG WT G Q E SL S DS D P EM WE LL QRE K D R Q C R G LE LI A SE N F C



TEL:4006-871-227 Web:www.ybio.net Email:shybio@126.com

SRAALEALGS CLNNKYSEGY PGKRYYGGAEE VVDEIELLCQ RRALEAFDLD PAQWGVNVQP
YSGSPANLAV YTALLQPHDR IMGLDLPDGG HLTHGYMSDV KRISATSIFF ESMPYKLNPK
TGLIDYNQLA LTARLFRPRL IIAGTSAYAR LIDYARMREV CDEVKAHLLA DMAHISGLVA
AKVIPSPFKH ADIVTTTHK TLRGARSGLI FYRKGVKAVD PKTGREIPYT FEDRINFAVF
PSLQGGPHNH AIAAVALK QACTPMFREY SLQVLKNARA MADALLERGY SLVSGGTDNH
LVLVLRPKG LDGARAERVL ELVSITANKN TCPGDRSAIT PGGLRLGAPA LTSRQFREDD
FRRVDFIDE GVNIGLEVKS KTAKLQDFKS FLLKDSETSQ RLANLRQRVE QFARAFPMMPG
FDEH