



TEL:4006-871-227 Web:www.ybio.net Email:shybio@126.com

YBA396Mu01 50 μ g
Recombinant Sex Hormone Binding Globulin (SHBG)
Organism Species: Mus musculus (Mouse)
Instruction manual

FOR IN VITRO USE AND RESEARCH USE ONLY
NOT FOR USE IN CLINICAL DIAGNOSTIC PROCEDURES

10th Edition (Revised in Jan, 2014)

[**PROPERTIES**]

Residues: Asp219~Ser358

Tags: Two N-terminal Tags, His-tag and S-tag

Accession: P97497

Host: *E. coli*

Subcellular Location: Secreted.

Purity: >95%

Endotoxin Level: <1.0EU per 1 μ g
(determined by the LAL method).

Formulation: Supplied as lyophilized form in 10mM PBS, pH7.4 containing 1mM DTT, 5% trehalose, 0.01% sarcosyl and preservative.

Predicted isoelectric point: 5.5 **Predicted Molecular Mass:**
20.6kDa

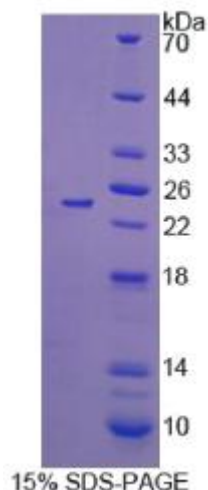
Accurate Molecular Mass: 24kDa as determined by SDS-PAGE reducing conditions.

Applications: SDS-PAGE; WB; ELISA; IP.

(May be suitable for use in other assays to be determined by the end user.)

Note: The possible reasons that the actual band size differs from the predicted are as follows:

1. Splice variants: Alternative splicing may create different sized proteins from the same gene.
2. Relative charge: The composition of amino acids may affects the charge of the protein.
3. Post-translational modification: Phosphorylation, glycosylation, methylation etc.
4. Post-translation cleavage: Many proteins are synthesized as pro-proteins, and then cleaved to give the active form.
5. Polymerization of the target protein: Dimerization, multimerization etc.





TEL:4006-871-227 Web:www.ybio.net Email:shybio@126.com

[**USAGE**]

Reconstitute in sterile ddH₂O.

[**STORAGE AND STABILITY**]

Storage: Avoid repeated freeze/thaw cycles.

Store at 2-8°C for one month.

Aliquot and store at -80°C for 12 months.

Stability Test: The thermal stability is described by the loss rate of the target protein. The loss rate was determined by accelerated thermal degradation test, that is, incubate the protein at 37°C for 48h, and no obvious degradation and precipitation were observed. (Referring from China Biological Products Standard, which was calculated by the Arrhenius equation.) The loss of this protein is less than 5% within the expiration date under appropriate storage condition.

[**SEQUENCES**]

The sequence of the target protein is listed below.

DV DLQPGLFFPP GTHAEFSLQD IPQPHADPW T FSLELGFKLV DGSGQLLALG
TGTNSSWLNI HLQNQSVVLS SEAEPKVLP LDVGLPLQLT LDRVKVLSQ GPKMEVLSMS
LLRPASLWRL WSHPPQHLSL GALPGESS

[**REFERENCES**]

1. Wang Y.-M., *et al.* (1989) Mol. Cell. Endocrinol. 63:85-92.
2. Selva D.M., *et al.* (2005) J. Biol. Chem. 280:4462-4468.
3. Selva D.M., *et al.* (2007) J. Clin. Invest. 117:3979-3987.
4. Skarnes W.C., *et al.* (2011) Nature 474:337-342.