



TEL:4006-871-227 Web:www.ybio.net Email:shybio@126.com

YBC845Hu01 1mg

Recombinant Renalase (RNLS)

Organism Species: Homo sapiens (Human)

Instruction manual

FOR IN VITRO USE AND RESEARCH USE ONLY

NOT FOR USE IN CLINICAL DIAGNOSTIC PROCEDURES

11th Edition (Revised in May, 2016)

[PROPERTIES]

Source: Prokaryotic expression.

Host: *E. coli*

Residues: Thr160~Phe319

Tags: N-terminal His-Tag

Tissue Specificity: Kidney.

Subcellular Location: Secreted.

Purity: >98%

Traits: Freeze-dried powder

Buffer formulation: 20mM Tris, 150mM NaCl, pH8.0, containing 1mM EDTA, 1mM DTT, 0.01% sarcosyl, 5%Trehalose and Proclin300.

Original Concentration: 200ug/mL

Applications: SDS-PAGE; WB; ELISA; IP; CoIP; Purification; Amine

Reactive Labeling.

(May be suitable for use in other assays to be determined by the end user.)

Predicted isoelectric point: 6.1

Predicted Molecular Mass: 19.0kDa

Accurate Molecular Mass: 19kDa as determined by SDS-PAGE reducing conditions.

[USAGE]



TEL:4006-871-227 Web:www.ybio.net Email:shybio@126.com

Reconstitute in 20mM Tris, 150mM NaCl (pH8.0) to a concentration of 0.1-1.0 mg/mL. Do not vortex.

[STORAGE AND STABILITY]

Storage: Avoid repeated freeze/thaw cycles.

Store at 2-8°C for one month.

Aliquot and store at -80°C for 12 months.

Stability Test: The thermal stability is described by the loss rate. The loss rate was determined by accelerated thermal degradation test, that is, incubate the protein at 37°C for 48h, and no obvious degradation and precipitation were observed. The loss rate is less than 5% within the expiration date under appropriate storage condition.

[SEQUENCE]

T MPVPEILQLQ GDITTLISEC QRQQLEAVSY SSRYALGLFY
EAGTKIDVPW AGQYITSNPC IRFVSIDNKK RNIESSEIGP SLVIHTTVPF
GVTYLEHSIE DVQELVFQQL ENILPGLPQP IATKCQKWRH SQVTNAAANC
PGQMTLHHKP FLACGGDGF

[IDENTIFICATION]

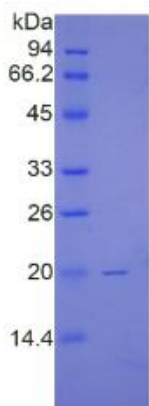


Figure 1. SDS-PAGE



EL:4006-871-
227 Web:www.ybio.
net Email:shybio
@126.com