



TEL:4006-871-227 Web:www.ybio.net Email:shybio@126.com

**YBF822Hu01**

**100µg**

**Recombinant Phosphatase And Tensin Homolog (PTEN)**

**Organism Species: Homo sapiens (Human)**

***Instruction  
manual***

**FOR IN VITRO USE AND RESEARCH USE ONLY**

**NOT FOR USE IN CLINICAL DIAGNOSTIC PROCEDURES**

9th Edition (Revised in Jul,  
20  
13)

## **[ PROPERTIES ]**

**Residues: Thr2~Val403 (Accession # P60484), with  
N-terminal His-Tag.**

**Host: *E. coli***

**Subcellular Location: Cytoplasm. Nucleus.**

**Nucleus, PML body.**

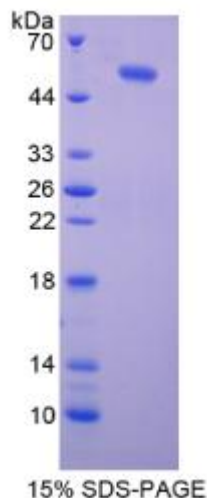
**Purity: >95%**

**Endotoxin Level: <1.0EU per 1µg (determined by the  
LAL method).**

**Formulation: Supplied as lyophilized form in PBS,  
pH7.4, containing 5% trehalose, 0.01% sarcosyl.**

**Predicted isoelectric point: 6.1**

**Predicted Molecular Mass: 48.6kDa**



The possible reasons that the actual band size differs from the predicted are as follows:

**Accurate Molecular Mass: 55kDa as determined by SDS-PAGE reducing  
conditions.**

**Applications: SDS-PAGE; WB; ELISA; IP.**

**(May be suitable for use in other assays to be determined by the end user.)**

**Note:**

**1. Splice variants: Alternative splicing may create different sized proteins from the same gene.**



TEL:4006-871-227 Web:www.ybio.net Email:shybio@126.com

2. Relative charge: The composition of amino acids may affects the charge of the protein.
3. Post-translational modification: Phosphorylation, glycosylation, methylation etc.
4. Post-translation cleavage: Many proteins are synthesized as pro-proteins, and then cleaved to give the active form.
5. Polymerization of the target protein: Dimerization, multimerization etc.

## **[ USAGE ]**

Reconstitute in sterile PBS, pH7.2-pH7.4.

## **[ STORAGE AND STABILITY ]**

Storage: Avoid repeated freeze/thaw cycles.

Store at 2-8°C for one month.

Aliquot and store at -80°C for 12 months.

Stability Test: The thermal stability is described by the loss rate of the target protein. The loss rate was determined by accelerated thermal degradation test, that is, incubate the protein at 37°C for 48h, and no obvious degradation and precipitation were observed. (Referring from China Biological Products Standard, which was calculated by the Arrhenius equation.) The loss of this protein is less than 5% within the expiration date under appropriate storage condition.

## **[ SEQUENCES ]**

The target protein is fused with N-terminal His-Tag, its sequence is listed below.

MGHHHHHSGSEF-TAIKEIVS RNKRRYQEDG FDLDTYIYP NIIAMGFP AE RLEGVYRNNI  
DDVVRFLDSK HKNHYKIYNL CAERHYDTAK FNCRVAQYPF EDHNPPQLEL IKPFCEDLDQ  
WLSEDDNHVA AIHCKAGKGR TGVMICAYLL HRGKFLKAQE ALDFYGEVRT RDKKGVTIPS  
QRRYVYYYSY LLKNHLDYRP VALLFHKMMF ETIPMFSGGT CNPQFVVCQL KVKIYSSNSG  
PTRREDKFMY FEFPQPLPVC GDIKVEFFHK QNKMLKKDKM FHFVWNTFFI PGPEETSEKV  
ENGLCDQEIDSICSIERAD NDKEYLVLT TLTKNDLDKANK DKANRYFSPN FKVKLYFTKT  
VEEPSNPEAS SSTSVTPDVS DNEPDHYRYS DTTDSPENE PFDEDQHTQI TKV