



TEL:4006-871-227 Web:www.ybio.net Email:shybio@126.com

YBA116Ca01

100µg Regulated On Activation In Normal T-Cell Expressed And Secreted
(RANTES)

Organism Species: *Canis familiaris*; Canine
(Dog)

*Instruction
manual*

FOR IN VITRO USE AND RESEARCH USE ONLY
NOT FOR USE IN CLINICAL DIAGNOSTIC PROCEDURES

9th Edition (Revised in Jul,
2013)

[PROPERTIES]

Residues: Ser24~Ser91 (Accession #
Q8HYS0), with two N-terminal Tags, His-
tag and S-tag.

Host: *E. coli*

Subcellular Location: Secreted.

Purity: >95%

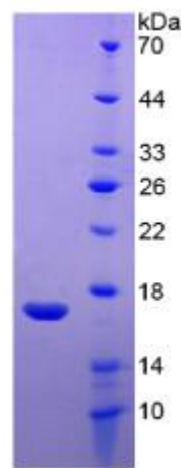
Endotoxin Level: <1.0EU per
1 µg (determined by the LAL

The possible reasons that the actual band size differs from the predicted are as follows:
method).

Formulation: Supplied as lyophilized form in PBS, pH7.4,
containing 5% sucrose, 0.01% sarcosyl.

Predicted isoelectric point: 8.9 Predicted Molecular
Mass: 13.6kDa

Accurate Molecular Mass: 17kDa as determined by SDS-





TEL:4006-871-227 Web:www.ybio.net Email:shybio@126.com

PAGE reducing conditions. Applications: SDS-PAGE; WB; ELISA; IP.

(May be suitable for use in other assays to be determined by the end user.)

Note:

1. Splice variants: Alternative splicing may create different sized proteins from the same gene.
2. Relative charge: The composition of amino acids may affects the charge of the protein.
3. Post-translational modification: Phosphorylation, glycosylation, methylation etc.
4. Post-translation cleavage: Many proteins are synthesized as pro-proteins, and then cleaved to give the active form.
5. Polymerization of the target protein: Dimerization, multimerization etc.

[USAGE]

Reconstitute in sterile PBS, pH7.2-pH7.4.

[STORAGE AND STABILITY]

Storage: Avoid repeated freeze/thaw cycles.

Store at 2-8°C for one month.

Aliquot and store at -80°C for 12 months.

Stability Test: The thermal stability is described by the loss rate of the target protein. The loss rate was determined by accelerated thermal degradation test, that is, incubate the protein at 37°C for 48h, and no obvious degradation and precipitation were observed. (Referring from China Biological Products Standard, which was calculated by the Arrhenius equation.) The loss of this protein is less than 5% within the expiration date under appropriate storage condition.

[SEQUENCES]

The target protein is fused with two N-terminal Tags, His-tag and S-tag, its sequence is listed below.



TEL:4006-871-227 Web:www.ybio.net Email:shybio@126.com

MHHHHHSSG LVPRGSGMKE TAAKFERQH MDSPDLGTDD DDKAMADIGS EF-
SPYASDT TPCCFAYISG RLPFTHVQEY FYTSSKCSMP AVVFVTRKHR QVCANPQKKW
VREYINSLEM S