



TEL:4006-871-227 Web:www.ybio.net Email:shybio@126.com

YBH119Mu01 100μg

Recombinant Serine/Threonine Kinase 3 (STK3)

Organism Species: *Mus musculus* (Mouse)

*Instruction  
manual*

FOR IN VITRO USE AND RESEARCH USE ONLY

NOT FOR USE IN CLINICAL DIAGNOSTIC PROCEDURES

10th Edition (Revised in Jan,  
2014)

## [ PROPERTIES ]

Residues: Thr235~Ala460

Tags: Two N-terminal Tags, His-tag and T7-tag

Accession: Q9JI10

Host: *E. coli*

Subcellular Location: Cytoplasm. Nucleus.

Purity: >95%

Endotoxin Level: <1.0EU per 1μg (determined by the  
LAL method).

Formulation: Supplied as lyophilized form in PBS, pH7.4,  
containing 5% trehalose, 0.01% sarcosyl.

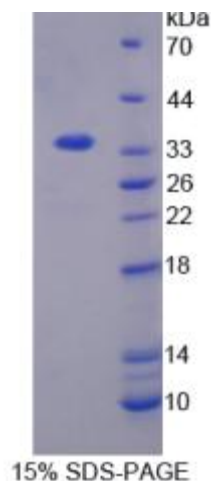
Predicted isoelectric point:

The possible reasons that the actual band size differs from the predicted are as follows:

4.5 Predicted Molecular Mass:

29.8kDa

Accurate Molecular Mass: 35kDa as determined by SDS-PAGE reducing  
conditions. Applications: SDS-PAGE; WB; ELISA; IP.





TEL:4006-871-227 Web:www.ybio.net Email:shybio@126.com

(May be suitable for use in other assays to be determined by the end user.)

**Note:**

1. Splice variants: Alternative splicing may create different sized proteins from the same gene.
2. Relative charge: The composition of amino acids may affects the charge of the protein.
3. Post-translational modification: Phosphorylation, glycosylation, methylation etc.
4. Post-translation cleavage: Many proteins are synthesized as pro-proteins, and then cleaved to give the active form.
5. Polymerization of the target protein: Dimerization, multimerization etc.

## [ USAGE ]

Reconstitute in sterile PBS, pH7.2-pH7.4.

## [ STORAGE AND STABILITY ]

Storage: Avoid repeated freeze/thaw cycles.

Store at 2-8°C for one month.

Aliquot and store at -80°C for 12 months.

Stability Test: The thermal stability is described by the loss rate of the target protein. The loss rate was determined by accelerated thermal degradation test, that is, incubate the protein at 37°C for 48h, and no obvious degradation and precipitation were observed. (Referring from China Biological Products Standard, which was calculated by the Arrhenius equation.) The loss of this protein is less than 5% within the expiration date under appropriate storage condition.

## [ SEQUENCES ]

The sequence of the target protein is listed below.

TNPPPT FRKPELWSDD FTDFVKKCLV KSPEQRATAT QLLQHPFIKN AKPVSILRDL  
IAEAMEIKAK RHEEQQRELE EEEENSDEDE LDSHTMVKTS SESVGTMRAT STMSEGAQTM  
IEHNSTMLES DLGTMVINSE EEEEEEEEEEE EDGTMKRNAT SPQVQRPSFM DYFDKQDFKN



TEL:4006-871-227 Web:[www.ybio.net](http://www.ybio.net) Email:[shybio@126.com](mailto:shybio@126.com)

KSHENCDSM REPGMSNSV FPDNWRVPQD GDFDLKNLS LEELQMLKA