



TEL:4006-871-227 Web:www.ybio.net Email:shybio@126.com

YBC404Hu01 100ug

Recombinant Collapsin Response Mediator Protein 1 (CRMP1)

Organism Species: Homo sapiens (Human)

*Instruction  
manual*

FOR IN VITRO USE AND RESEARCH USE ONLY

NOT FOR USE IN CLINICAL DIAGNOSTIC PROCEDURES

10th Edition (Revised in Jan,  
2014)

## [ PROPERTIES ]

Residues: Met1~Val250

Tags: Two N-terminal Tags, His-tag and T7-tag

Accession: Q14194

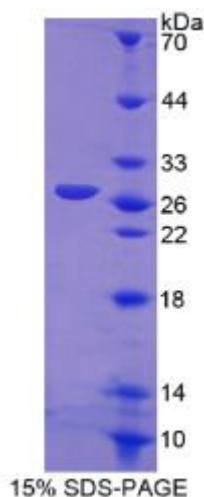
Host: *E. coli*

Subcellular Location: Cytoplasm. Cytoskeleton.

Purity: >95%

Endotoxin Level: <1.0EU per 1 $\mu$ g (determined by the  
LAL method).

Formulation: Supplied as lyophilized form in 20mM Tris  
150mM NaCl, pH8.0, containing 1mM EDTA, 1mM DTT, 0.01%  
sarcosyl, 5% trehalose, and preservative.



The possible reasons that the actual band size differs from the predicted are as follows:

Predicted isoelectric point:

4.8 Predicted Molecular Mass:

31.1kDa

Accurate Molecular Mass: 28kDa as determined by SDS-PAGE reducing  
conditions. Applications: SDS-PAGE; WB; ELISA; IP.



TEL:4006-871-227 Web:www.ybio.net Email:shybio@126.com

(May be suitable for use in other assays to be determined by the end user.)

**Note:**

1. Splice variants: Alternative splicing may create different sized proteins from the same gene.
2. Relative charge: The composition of amino acids may affects the charge of the protein.
3. Post-translational modification: Phosphorylation, glycosylation, methylation etc.
4. Post-translation cleavage: Many proteins are synthesized as pro-proteins, and then cleaved to give the active form.
5. Polymerization of the target protein: Dimerization, multimerization etc.

[ USAGE ]

Reconstitute in sterile ddH<sub>2</sub>O.

[ STORAGE AND STABILITY ]

Storage: Avoid repeated freeze/thaw cycles.

Store at 2-8°C for one month.

Aliquot and store at -80°C for 12 months.

Stability Test: The thermal stability is described by the loss rate of the target protein. The loss rate was determined by accelerated thermal degradation test, that is, incubate the protein at 37°C for 48h, and no obvious degradation and precipitation were observed. (Referring from China Biological Products Standard, which was calculated by the Arrhenius equation.) The loss of this protein is less than 5% within the expiration date under appropriate storage condition.

[ SEQUENCES ]

The sequence of the target protein is listed below.

MSYQGKKSIP HITSDRLLIK GGRIINDDQS LYADVLEDG LIKQIGENLI VPGGVKTIEA

NGRMVIPGGI DVNTYLQKPS QGMTAADDF QGTRALVGG TTMIIDHVVP EPGSSLLTSF

E K W H E A A D T K S C C D Y S L H V D I T S W Y D G V R E E L E V L V Q D K G V N S F Q V Y M A Y



TEL:4006-871-227 Web:[www.ybio.net](http://www.ybio.net) Email:[shybio@126.com](mailto:shybio@126.com)

KDVYQMSDSQ LYEFTFLKG LGAVILVHAE NGDLIAQEQK RILEMGITGP EGHALSRPEE  
LEAEAVFRAI TIAGRINCPV