



TEL:4006-871-227 Web:www.ybio.net Email:shybio@126.com

YBH918Hu01 100µg

Recombinant Hephaestin (HEPH)

Organism Species: Homo sapiens (Human)

Instruction manual

FOR IN VITRO USE AND RESEARCH USE ONLY

NOT FOR USE IN CLINICAL DIAGNOSTIC PROCEDURES

10th Edition (Revised in Jan, 2014)

[PROPERTIES]

Residues: Ala24~Cys366

Tags: Two N-terminal Tags, His-tag and T7-tag

Accession: Q9BQS7

Host: *E. coli*

**Subcellular Location: Membrane, Single-pass
type I membrane protein.**

Purity: >95%

**Endotoxin Level: <1.0EU per 1µg (determined by the LAL
method).**

**Formulation: Supplied as lyophilized form in PBS, pH7.4,
containing 5% trehalose, 0.01% sarcosyl.**

Predicted isoelectric point: 5.4

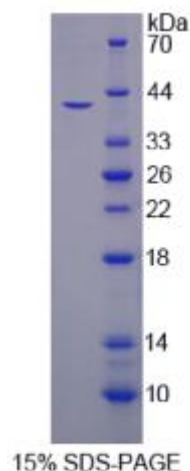
Predicted Molecular Mass: 42.1kDa

Applications: SDS-PAGE; WB; ELISA; IP.

(May be suitable for use in other assays to be determined by the end user.)

[USAGE]

Reconstitute in sterile PBS, pH7.2-pH7.4.





[STORAGE AND STABILITY]

Storage: Avoid repeated freeze/thaw cycles.

Store at 2-8°C for one month.

Aliquot and store at -80°C for 12 months.

Stability Test: The thermal stability is described by the loss rate of the target protein. The loss rate was determined by accelerated thermal degradation test, that is, incubate the protein at 37°C for 48h, and no obvious degradation and precipitation were observed. (Referring from China Biological Products Standard, which was calculated by the Arrhenius equation.) The loss of this protein is less than 5% within the expiration date under appropriate storage condition.

[SEQUENCES]

The sequence of the target protein is listed below.

**ATRVYYL GIRDVQWNYA PKGRNVITNQ PLDSDIVASS FLKSDKNRIG GTYKKTIYKE
YKDDSYTDEV AQPWLGFLG PVLQAEVGDV ILIHLKNFAT RPYTIHPHGV FYEKDSEGL
YPDGSSGPLK ADDSVPPGGS HIYNWTIPEG HAPTDADPAC LTWYHSHVD APRDIATGLI
GPLITCKRGA LDGNSPPQRQ DVDHDFLLF SVVDENLSWH LNENIATYCS DPASVDKEDE
TFQESNRMHA INGFVFGNLP ELNMCAQKRV AWHLFGMGNE IDVHTAFFHG QMLTTRGHHT
DVANIFPATF VTAEMVPWEP GTWLISCQVN SHFRDGMQAL YKVKSC**