



TEL:4006-871-227 Web:www.ybio.net Email:shybio@126.com

**YB98829Hu  
01**

**Phosphoinositide-3-Kinase Catalytic Beta Polypeptide (PIK3Cb)**

**Organism: Homo sapiens (Human)**

***Instruction manual***

FOR IN VITRO USE AND RESEARCH USE ONLY

NOT FOR USE IN DIAGNOSTIC OR THERAPEUTIC PROCEDURES

5th Edition (Revised in January, 2013)

**[ DESCRIPTION ]**

**Protein Names:** Phosphoinositide-3-Kinase Catalytic

Beta Polypeptide

**Synonyms:** PIK3Cb, PIK3C1

**Species:** Human

**Size:** 100μg

**Source:** *Escherichia coli* -derived

**Subcellular Location:** Cytoplasm. Nucleus.

**[ PROPERTIES ]**

**Residues:** Ala524~Val703 (Accession # P42338), with N-terminal His-Tag.

**Grade & Purity:** >95%, 25kDa as determined by SDS-PAGE reducing conditions.

**Formulation:** Supplied as lyophilized form in PBS, pH 7.4 containing 5% sucrose.

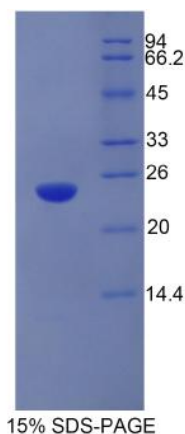
**Endotoxin Level:** <1.0 EU per 1μg (determined by the LAL method).

**Applications:** SDS-PAGE; WB; ELISA; IP.

(May be suitable for use in other assays to be determined by the end user.)

**Predicted Molecular Mass:** 22.5kDa

**Human PIK3Cb kDa**





TEL: 4006-871-

227 Web: [www.ybio.net](http://www.ybio.net) Email: [shybio@126.com](mailto:shybio@126.com)

**Predicted isoelectric point: 6.2**



TEL:4006-871-227 Web:www.ybio.net Email:shybio@126.com

### **[ PREPARATION ]**

Reconstitute in sterile PBS, pH7.2-pH7.4.

### **[ STORAGE AND STABILITY ]**

**Storage: Avoid repeated freeze/thaw cycles.**

Store at 2-8°C for one month.

Aliquot and store at -80°C for 12 months.

**Stability Test:** The thermal stability is described by the loss rate of the target protein. The loss rate was determined by accelerated thermal degradation test, that is, incubate the protein at 37°C for 48h, and no obvious degradation and precipitation were observed. (Referring from China Biological Products Standard, which was calculated by the Arrhenius equation.) The loss of this protein is less than 5% within the expiration date under appropriate storage condition.

### **[ SEQUENCES ]**

The target protein is fused with N-terminal His-Tag, its sequence is listed below.

MGHHHHHSGSEF-ANVSSRG GKKFLPVLKE ILDRDPLSQL CENEMDLIWT LRQDCREIFP  
QSLPKLLLSI KWNKLEDVAQ LQALLQIWPK LPPREALLEL DFNYPDQYVR EYAVGCLRQM  
SDEELSQYLL QLVQVLKYEP FLDCAISRFL LERALGNRRI GQFLFWHLRS EVHIPAVSVQ  
FGVILEAYCR GSV