



TEL:4006-871-227 Web:www.ybio.net Email:shybio@126.com

YB91901Hu  
01

Activin Receptor Like Kinase 1 (ALK1)

Organism: Homo sapiens (Human)

Instruction manual

FOR IN VITRO USE AND RESEARCH USE ONLY

NOT FOR USE IN DIAGNOSTIC OR THERAPEUTIC PROCEDURES

5th Edition (Revised in January, 2013)

### [ DESCRIPTION ]

Protein Names: Activin Receptor Like Kinase 1

Synonyms: ALK1, ACVRLK1

Species: Human

Size: 100)g

Source: Escherichia coli-derived

Subcellular Location: Membrane; Single-pass type I membrane protein.

### [ PROPERTIES ]

Residues: Ser238~Arg479 (Accession # P37023), with N-terminal His-Tag.

Grade & Purity: >95%, 31kDa as determined by SDS-PAGE reducing conditions.

Formulation: Supplied as lyophilized form in PBS, pH 7.4, containing 5% sucrose.

Endotoxin Level: <1.0 EU per 1µg (determined by the LAL method).

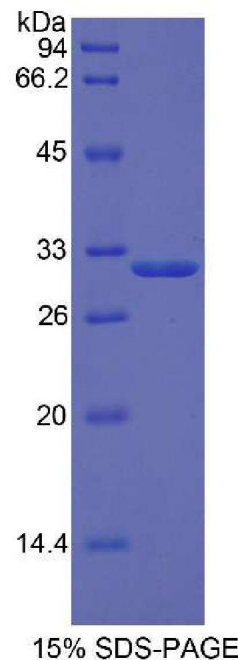
Applications: SDS-PAGE; WB; ELISA; IP.

(May be suitable for use in other assays to be determined by the end user.)

Predicted Molecular Mass: 29.2kDa

Predicted isoelectric point: 6.2

Human ALK1





TEL:4006-871-227 Web:www.ybio.net Email:shybio@126.com

### [ PREPARATION ]

Reconstitute in sterile PBS, pH7.2-pH7.4.

### [ STORAGE AND STABILITY ]

Storage: Avoid repeated freeze/thaw cycles.

Store at 2-8°C for one month.

Aliquot and store at -80°C for 12 months.

Stability Test: The thermal stability is described by the loss rate of the target protein. The loss rate was determined by accelerated thermal degradation test, that is, incubate the protein at 37°C for 48h, and no obvious degradation and precipitation were observed. (Referring from China Biological Products Standard, which was calculated by the Arrhenius equation.) The loss of this protein is less than 5% within the expiration date under appropriate storage condition.

### [ SEQUENCES ]

The target protein is fused with N-terminal His-Tag, its sequence is listed below.

MGHHHHHSGSEF-SWF RETEIYNTVL LRHDNILGFI ASDMTSRNSS TQLWLITHYH  
EHGSLYDFLQ RQTLEPHLAL RLAVSAACGL AHLHVEIFGT QGKPAIAHRD FKSRNVLVKS  
NLQCCIADLG LAVMHSQGSD YLDIGNNPRV GTKRYMAPEV LDEQIRTDCF ESYKWTDIWA  
FGLVLWEIAR RTIVNGIVED YRPPFYDVVP NDPSFEDMKK VVCVDQQTPT IPNRLAADPV  
LSGLAQMMRE CWYPNPSAR