



TEL:4006-871-227 Web:www.ybio.net Email:shybio@126.com

**YBD709Hu01 100µg**  
**Recombinant Killer Cell Immunoglobulin Like Receptor 2DL3 (KIR2DL3)**  
**Organism Species: Homo sapiens (Human)**  
***Instruction manual***

**FOR IN VITRO USE AND RESEARCH USE ONLY**  
**NOT FOR USE IN CLINICAL DIAGNOSTIC PROCEDURES**

9th Edition (Revised in Jul, 2013)

**[ PROPERTIES ]**

**Residues:** His22~Pro341 (Accession # P43628), with two N-terminal Tags, His-tag and GST-tag.

**Host:** *E. coli*

**Subcellular Location:** Cell membrane; Single-pass type I membrane protein.

**Purity:** >95%

**Endotoxin Level:** <1.0EU per 1µg (determined by the LAL method).

**Formulation:** Supplied as lyophilized form in 20mM Tris, 500mM NaCl, pH8.0, containing 1mM EDTA, 0.01% sarcosyl, 5% trehalose, and preservative.

**Predicted isoelectric point:** 6.2

**Predicted Molecular Mass:** 67.3kDa

**Accurate Molecular Mass:** 60kDa as determined by SDS-PAGE reducing conditions.

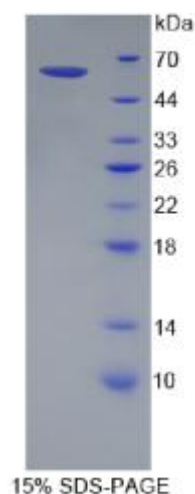
**Applications:** SDS-PAGE; WB; ELISA; IP.

**(May be suitable for use in other assays to be determined by the end user.)**

The possible reasons that the actual band size differs from the predicted are as follows:

**Note:**

1. Splice variants: Alternative splicing may create different sized proteins from the same gene.
2. Relative charge: The composition of amino acids may affects the charge of the protein.
3. Post-translational modification: Phosphorylation, glycosylation, methylation etc.
4. Post-translation cleavage: Many proteins are synthesized as pro-proteins, and then cleaved to give the active form.
5. Polymerization of the target protein: Dimerization, multimerization etc.





TEL:4006-871-227 Web:www.ybio.net Email:shybio@126.com

## **[ USAGE ]**

Reconstitute in sterile PBS, pH7.2-pH7.4.

## **[ STORAGE AND STABILITY ]**

Storage: Avoid repeated freeze/thaw cycles.

Store at 2-8°C for one month.

Aliquot and store at -80°C for 12 months.

Stability Test: The thermal stability is described by the loss rate of the target protein. The loss rate was determined by accelerated thermal degradation test, that is, incubate the protein at 37°C for 48h, and no obvious degradation and precipitation were observed. (Referring from China Biological Products Standard, which was calculated by the Arrhenius equation.) The loss of this protein is less than 5% within the expiration date under appropriate storage condition.

## **[ SEQUENCES ]**

The target protein is fused with two N-terminal Tags, His-tag and GST-tag, its sequence is listed below.

MSPILGYWKI KGLVQPTRL L LEYLEEKYEE HLYERDEGDK WRNKKFELGL EFPNLPPYYID  
GDVKLTQSMA IIRYIADKHN MLGGCPKERA EISMLEGAVL DIRYGVSRIA YSKDFETLKV  
DFLSKLPEML KMFEDRLCHK TYLNGDHVTH PDFMLYDALD VVLYMDPMCL DAFPKLVCFK  
KRIEAIQID KYLKSSKYIA WPLQGWWQATF GGGDHPPKSD GSTSGSGHHH HHHSAGLVPR  
GSTAIGMKET AAARKFERQHM DSPDLGTLEV LFQGPLGS- HEGVHRKPS LLAHPGPLVK  
SEETVILQCW SDVRFQHFLL HREGKFKDTL HLIGEHHGVD SKANFSIGPM MQDLAGTYRC  
YGSVTHSPYQ LSAPSDPLDI VITGLYEKPS LSAQPGPTVL AGESVTLSCS SRSSYDMYHL  
SREGEAHERRFSAGPKVNGTFQADFPLGPATHGGTYRCFGSFRDSPYEWS  
NSSDPLLVSV TGNPSNSWPS PTEPSSETGN PRHLHVLIGT SVVILFILL LFFLLHRWCC  
NKKNAVVMQ EPAGNRTVNR EDSDEQDPQE VTYAQLNHCV FTQRKITRPS QRPKTPPTDI  
IVYTELPNAE P

## **[ REFERENCES ]**

1. Colonna M., Samaridis J. (1995) Science 268:405-408.
2. Maenaka K., *et al.* (1999) Structure 7:391-398.
3. Yu M.-C., *et al.* (2008) Nat. Immunol. 9:898-907.



TEL:4006-871-227 Web:www.ybio.net Email:shybio@126.com

**4. Wilson M.J., *et al.* (1997) Tissue Antigens 49:574-579.**