

**YBA933Mu01 10µg**

**Recombinant Intelectin 1 (ITLN1)**

**Organism Species: Mus musculus (Mouse)**

***Instruction manual***

FOR IN VITRO USE AND RESEARCH USE ONLY

NOT FOR USE IN CLINICAL DIAGNOSTIC PROCEDURES

11th Edition (Revised in May, 2016)

## **[ PROPERTIES ]**

**Source:** Prokaryotic expression.

**Host:** *E. coli*

**Residues:** Arg28~Gly270

**Tags:** N-terminal His-Tag

**Homology:** Human 81%, rat 88%

**Tissue Specificity:** Intestine, stomach, kidney, brain.

**Subcellular Location:** Cell membrane; Lipid-anchor, GPI-anchor. Secreted.

**Purity:** >95%

**Endotoxin Level:** <1.0EU per 1µg (determined by the LAL method).

**Traits:** Freeze-dried powder

**Buffer formulation:** PBS, pH7.4, containing 1mM DTT, 5% trehalose, 0.01% sarcosyl and Proclin300.

**Original Concentration:** 200ug/mL

**Applications:** SDS-PAGE; WB; ELISA; IP; CoIP; Reporter Assays; Purification; Amine Reactive Labeling.

(May be suitable for use in other assays to be determined by the end user.)

**Predicted isoelectric point:** 8.8

**Predicted Molecular Mass:** 28.7kDa

**Accurate Molecular Mass:** 30kDa as determined by SDS-PAGE reducing conditions.

## [ USAGE ]

Reconstitute in PBS (pH7.4) to a concentration of 0.1-1.0 mg/mL. Do not vortex.

## [ STORAGE AND STABILITY ]

**Storage:** Avoid repeated freeze/thaw cycles.

Store at 2-8°C for one month.

Aliquot and store at -80°C for 12 months.

**Stability Test:** The thermal stability is described by the loss rate. The loss rate was determined by accelerated thermal degradation test, that is, incubate the protein at 37°C for 48h, and no obvious degradation and precipitation were observed. The loss rate is less than 5% within the expiration date under appropriate storage condition.

## [ SEQUENCE ]

```

                                RWG NSFFSSLPRS CKEIKQEHTK
A Q D G L Y F L R T K N G V I Y Q T F C D M T T A G G G W T L V A S V H E N N M R G K C T V G D R W
S S Q Q G N R A D Y P E G D G N W A N Y N T F G S A E A A T S D D Y K N P G Y F D I Q A E N L G I W
H V P N K S P L H N W R K S S L L R Y R T F T G F L Q H L G H N L F G L Y K K Y P V K Y G E G K C W
T D N G P A L P V V Y D F G D A R K T A S Y Y S P S G Q R E F T A G Y V Q F R V F N N E R A A S A L
C A G V R V T G C N T E H H C I G G G G
```

## [ IDENTIFICATION ]

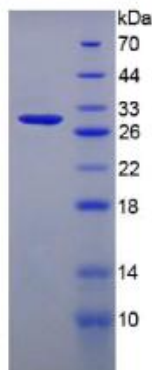


Figure 1. SDS-PAGE