



TEL:4006-871-227 Web:www.ybio.net Email:shybio@126.com

YBA800Mu01 50µg

Recombinant Pregnancy Associated Plasma Protein A (PAPPA)

Organism Species: Mus musculus (Mouse)

Instruction manual

FOR IN VITRO USE AND RESEARCH USE ONLY

NOT FOR USE IN CLINICAL DIAGNOSTIC PROCEDURES

11th Edition (Revised in May, 2016)

[PROPERTIES]

Source: Prokaryotic expression.

Host: *E. coli*

Residues: Phe999~Asn1272

Tags: Two N-terminal Tags, His-tag and GST-tag

Tissue Specificity: Kidney, Spleen, Brain, Ovary.

Subcellular Location: Secreted.

Purity: >95%

Traits: Freeze-dried powder

Buffer formulation: 100mM NaHCO₃, 500mM NaCl, pH8.3, containing 1mM EDTA, 1mM DTT, 0.01% sarcosyl, 5%Trehalose and Proclin300.

Original Concentration: 200ug/mL

Applications: SDS-PAGE; WB; ELISA; IP; CoIP; Reporter Assays; Purification; Amine Reactive Labeling.

(May be suitable for use in other assays to be determined by the end user.)

Predicted isoelectric point: 5.8

Predicted Molecular Mass: 62.2kDa

Accurate Molecular Mass: 60kDa as determined by SDS-PAGE reducing conditions.

[USAGE]

Reconstitute in 100mM NaHCO₃, 500mM NaCl (pH8.3) to a concentration of 0.1-1.0 mg/mL. Do not vortex.

[STORAGE AND STABILITY]

Storage: Avoid repeated freeze/thaw cycles.

Store at 2-8°C for one month.

Aliquot and store at -80°C for 12 months.

Stability Test: The thermal stability is described by the loss rate. The loss rate was determined by accelerated thermal degradation test, that is, incubate the protein at 37°C for 48h, and no obvious degradation and precipitation were observed. The loss rate is less than 5% within the expiration date under appropriate storage condition.

[SEQUENCE]

QKTSIKDCGV YTPQGFLDQW ASNASVSHQD QQCPGWVVG QPAASQVCRT
 KVIDLSEGIS QHAWYPCTIT YPYYHLPQTT FWLQTYFSQP MVAHAVIIHL
 VTDGTYYGDO KQETISVQLL DTKDQSHDLG LHVLSRNNP LIIPVVHDL
 QPFYHSQAVH VSFSSPLVAI SGVALRSFDN FDPVTLSSCQ RGETYSPAEQ
 SCVHFACQAA DCELA VGNA SLNCSSNHHY HGAQCTVSCQ TGYVLQIQRD
 DELIKSQVGP SITVCTTEGK WN

[IDENTIFICATION]

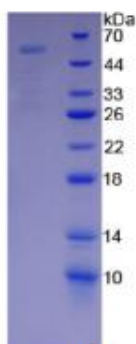


Figure 1. SDS-PAGE



T

EL:4006-871-
227 Web:www.ybi
o.net Email:shy
bio@126.com