



TEL:4006-871-227 Web:www.ybio.net Email:shybio@126.com

**YBD562Mu01 50μg**

**Recombinant Mitogen Activated Protein Kinase Kinase 2 (MAP2K2)**

**Organism Species: Mus musculus (Mouse)**

***Instruction  
manual***

FOR IN VITRO USE AND RESEARCH USE ONLY

NOT FOR USE IN CLINICAL DIAGNOSTIC PROCEDURES

11th Edition (Revised in May,  
2016)

## **[ PROPERTIES ]**

**Source:** Prokaryotic expression.

**Host:** *E. coli*

**Residues:** Leu44~Ser313

**Tags:** N-terminal His-Tag

**Tissue Specificity:** Kidney, Liver, Lung, Pancreas.

**Purity:** >92%

**Traits:** Freeze-dried powder

**Buffer formulation:** 20mM Tris, 150mM NaCl, pH8.0, containing 1mM

EDTA, 1mM DTT, 0.01% sarcosyl, 5%Trehalose and Proclin300.

**Original Concentration:** 200ug/mL

**Applications:** SDS-PAGE; WB; ELISA; IP; CoIP; Purification; Amine

Reactive Labeling.

(May be suitable for use in other assays to be determined by the end user.)



TEL:4006-871-227 Web:www.ybio.net Email:shybio@126.com

**Predicted isoelectric point:**

**7.0 Predicted Molecular Mass:**

33.5kDa

**Accurate Molecular Mass:** 34kDa as determined by SDS-PAGE reducing conditions.

### [ USAGE ]

Reconstitute in 20mM Tris, 150mM NaCl (pH8.0) to a concentration of 0.1-1.0 mg/mL. Do not vortex.

### [ STORAGE AND STABILITY ]

**Storage:** Avoid repeated freeze/thaw cycles.

Store at 2-8°C for one month.

Aliquot and store at -80°C for 12 months.

**Stability Test:** The thermal stability is described by the loss rate. The loss rate was determined by accelerated thermal degradation test, that is, incubate the protein at 37°C for 48h, and no obvious degradation and precipitation were observed. The loss rate is less than 5% within the expiration date under appropriate storage condition.

### [ SEQUENCE ]

LDLDEQQ  
 RKRLEAFLTQ KAKVGELKDD DFERISELGA GNNGVVTGAR HRPGLIMAR  
 KLIHLEIKPA VRNQIIRELQ VLHECNIPYI VGFYGAIFYSD GEISICMEHM  
 DGGSLDQVLK EAKRIPEDIL GKVSIAVLRG LAYLREKHQI MHRDVKPSNI  
 LVNSRGEIKL CDFGVSGQLI DSMANSFVGT RSYMSPERLQ GTHYSVQSDI  
 WSMGLSLVEL AIGRYPIPPP DAKELEASFG RPVVDGADGE PHSVSPRPRP  
 PGRPISVGHG MDS

# [ IDENTIFICATION ]

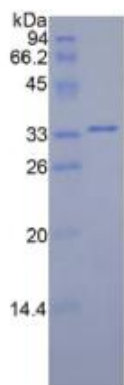


Figure 1. SDS-PAGE