



TEL:4006-871-227 Web:www.ybio.net Email:shybio@126.com

YBA537Mu01 100μg
Recombinant Enolase, Neuron Specific (NSE)
Organism Species: Mus musculus (Mouse)

*Instruction
manual*

FOR IN VITRO USE AND RESEARCH USE ONLY
NOT FOR USE IN CLINICAL DIAGNOSTIC PROCEDURES

9th Edition (Revised in Jul,
2013)

[PROPERTIES]

Residues: Met1~Leu434 (Accession # Q545V3), with
N-terminal His-Tag.

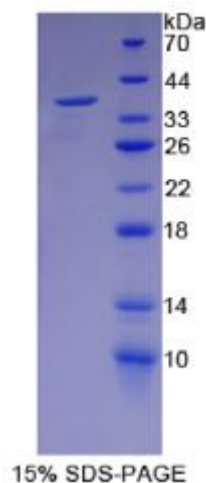
Host: *E. coli*

Purity: >95%

Endotoxin Level: <1.0EU per 1μg (determined by the
LAL method).

Formulation: Supplied as lyophilized form in PBS,
pH7.4, containing 1mM DTT, 5% trehalose, 0.05%
sarcosyl and preservative.

Predicted isoelectric point:



The possible reasons that the actual band size differs from the predicted are as follows:

5.2 Predicted Molecular Mass:

48.8kDa

Accurate Molecular Mass: 37kDa as determined by SDS-PAGE reducing
conditions. Applications: SDS-PAGE; WB; ELISA; IP.



TEL:4006-871-227 Web:www.ybio.net Email:shybio@126.com

(May be suitable for use in other assays to be determined by the end user.)

Note:

1. Splice variants: Alternative splicing may create different sized proteins from the same gene.
2. Relative charge: The composition of amino acids may affects the charge of the protein.
3. Post-translational modification: Phosphorylation, glycosylation, methylation etc.
4. Post-translation cleavage: Many proteins are synthesized as pro-proteins, and then cleaved to give the active form.
5. Polymerization of the target protein: Dimerization, multimerization etc.

[USAGE]

Reconstitute in sterile PBS, pH7.2-pH7.4.

[STORAGE AND STABILITY]

Storage: Avoid repeated freeze/thaw cycles.

Store at 2-8°C for one month.

Aliquot and store at -80°C for 12 months.

Stability Test: The thermal stability is described by the loss rate of the target protein. The loss rate was determined by accelerated thermal degradation test, that is, incubate the protein at 37°C for 48h, and no obvious degradation and precipitation were observed. (Referring from China Biological Products Standard, which was calculated by the Arrhenius equation.) The loss of this protein is less than 5% within the expiration date under appropriate storage condition.

[SEQUENCES]

The target protein is fused with N-terminal His-Tag, its sequence is listed below.

MG H H H H H S G S EF - MS I E K I WAR E ILD S R G N P TV EV D LY TA K G L FR A AVP S G AS
TGIYEALRLR DGDKQRYLGK GVLKAVDHIN SRIAPALISS GISVVEQEKL DNLMLELDGT
ENKSKFGANA ILGVSLAVCK AGAAERDLPL YRHIAQLAGN SDLILPVPAF NVINGGSHAG



TEL:4006-871-227 Web:www.ybio.net Email:shybio@126.com

NKLAMQEFMI LPVGAESFRD AMRLGAEVYH TLKGVIKDKY GKDATNVGDE GGFAPNILEN
SEALELVKEA IDKAGYTEKM VIGMDVAASE FYRDGKYDLD FKSPADPSRY ITGDLGALY
QDFVRNYPVV SIEDPFDQDD WAAWSKFTAN VGIQIVGDDL TVTNPKRIER AVEEKACNCL
LLKVNQIGSV TEAIQACKLA QENGWGMVS HRSGETEDTF IADLVVGLCT GQIKTGAPCR
SERLAKYNQL MRIEEELGDE ARFAGHNFRN PSVL

[REFERENCES]

1. Carninci P., *et al.* (2000) Genome Res. 10:1617-1630.
2. Shibata K., *et al.* (2000) Genome Res. 10:1757-1771.
3. Mural R. J., *et al.* (2002) Science 296:1661-1671.
4. Hearn C. J., *et al.* (1999) Dev. Dyn. 214:239-247.