



TEL:4006-871-227 Web:www.ybio.net Email:shybio@126.com

YBH015Hu01 100μg

Recombinant Talin 2 (TLN2)

Organism Species: Homo sapiens (Human)

Instruction manual

FOR IN VITRO USE AND RESEARCH USE ONLY

NOT FOR USE IN CLINICAL DIAGNOSTIC PROCEDURES

10th Edition (Revised in Jan, 2014)

[PROPERTIES]

Residues: Phe2240~Thr2492

Tags: Two N-terminal Tags, His-tag and T7-tag

Accession: Q9Y4G6

Host: *E. coli*

Subcellular Location: Cell junction, focal adhesion.

Purity: >95%

Endotoxin Level: <1.0EU per 1μg (determined by the LAL method).

Formulation: Supplied as lyophilized form in PBS, pH7.4, containing 5% trehalose, 0.01% sarcosyl.

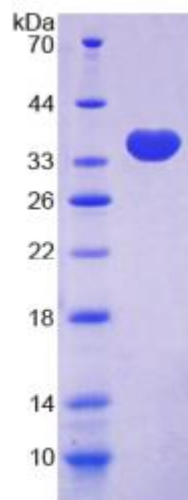
Predicted isoelectric point: 5.2

Predicted Molecular Mass: 30.1kDa

Accurate Molecular Mass: 35kDa as determined by SDS-PAGE reducing conditions.

Applications: SDS-PAGE; WB; ELISA; IP.

(May be suitable for use in other assays to be determined by the end user.)



The possible reasons that the actual band size differs from the predicted are as follows:

Note:

1. Splice variants: Alternative splicing may create different sized proteins from the same gene.
2. Relative charge: The composition of amino acids may affect the charge of the protein.
3. Post-translational modification: Phosphorylation, glycosylation, methylation etc.
4. Post-translation cleavage: Many proteins are synthesized as pro-proteins, and then cleaved to give the active form.
5. Polymerization of the target protein: Dimerization, multimerization etc.



TEL:4006-871-227 Web:www.ybio.net Email:shybio@126.com

[USAGE]

Reconstitute in sterile PBS, pH7.2-pH7.4.

[STORAGE AND STABILITY]

Storage: Avoid repeated freeze/thaw cycles.

Store at 2-8°C for one month.

Aliquot and store at -80°C for 12 months.

Stability Test: The thermal stability is described by the loss rate of the target protein. The loss rate was determined by accelerated thermal degradation test, that is, incubate the protein at 37°C for 48h, and no obvious degradation and precipitation were observed. (Referring from China Biological Products Standard, which was calculated by the Arrhenius equation.) The loss of this protein is less than 5% within the expiration date under appropriate storage condition.

[SEQUENCES]

The sequence of the target protein is listed below.

F GTECTLG YLD LLEHVLVILQ KPTPEFKQQL AAFSKRVAGA VTELIQA AEA MKGTEWVDPE
DPTVIAETEL LGAAASIEAA AKKLEQLKPR AKPKQADETL DFEEQILEAA KSIAAATSAL
VKSASAAQRE LVAQGKVGSI PANAADDGQW SQGLISAARM VAAATSSLCE AANASVQGHA
SEEKLISSAK QVAASTAQLL VACKVKADQD SEAMRRLQAA GNAVKRASDN LVRAAQKAAF
GKADDDDVVV KT