



TEL:4006-871-227 Web:www.ybio.net Email:shybio@126.com

**YB95368Hu0
1**

Carnitine Palmitoyltransferase 1A, Liver (CPT1A)

Organism: Homo sapiens (Human)

Instruction manual

FOR IN VITRO USE AND RESEARCH USE ONLY

NOT FOR USE IN DIAGNOSTIC OR THERAPEUTIC PROCEDURES

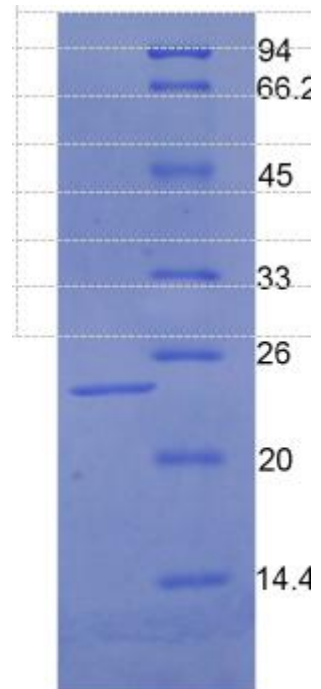
5th Edition (Revised in January, 2013)

[DESCRIPTION]

Protein Names: Carnitine Palmitoyltransferase 1A,

Liver

Human CPT1A kDa



15% SDS-PAGE

Synonyms: CPT1A, CPT1

Species: Human

Size: 100µg



TEL:4006-871-227 Web:www.ybio.net Email:shybio@126.com

Source: *Escherichia coli* -derived

Subcellular Location: Mitochondrion outer membrane; Multi-pass membrane protein.

[PROPERTIES]

Residues: Arg191~Leu353 (Accession # P50416), with N-terminal His-Tag.

Grade & Purity: >95%, 23kDa as determined by SDS-PAGE reducing conditions.

Formulation: Supplied as lyophilized form in PBS, pH 7.4, containing 5% sucrose.

Endotoxin Level: <1.0 EU per 1 μ g (determined by the LAL method).

Applications: SDS-PAGE; WB; ELISA; IP.

(May be suitable for use in other assays to be determined by the end user.)

Predicted Molecular Mass: 21.0kDa

Predicted isoelectric point: 9.5



TEL:4006-871-227 Web:www.ybio.net Email:shybio@126.com

[PREPARATION]

Reconstitute in sterile PBS, pH7.2-pH7.4.

[STORAGE AND STABILITY]

Storage: Avoid repeated freeze/thaw cycles.

Store at 2-8°C for one month.

Aliquot and store at -80°C for 12 months.

Stability Test: The thermal stability is described by the loss rate of the target protein. The loss rate was determined by accelerated thermal degradation test, that is, incubate the protein at 37°C for 48h, and no obvious degradation and precipitation were observed. (Referring from China Biological Products Standard, which was calculated by the Arrhenius equation.) The loss of this protein is less than 5% within the expiration date under appropriate storage condition.

[SEQUENCES]

The target protein is fused with N-terminal His-Tag, its sequence is listed below.

MGHHHHHSGSEF-RPLMKEEDFK RMTALAQDFA VGLGPRQLQWY LKLKSWWATN
YVSDWWEEYI YLRGRGPLMV NSNYAMDLL YILPTHIQAA RAGNAIHAIL LYRRKLDREE
IKPIRLLGST IPLCSAQWER MFNTSRIPGE ETDTIQHMRD SKHIVVYHRG RYFKVWLYHD
GRL