



TEL:4006-871-227 Web:www.ybio.net Email:shybio@126.com

YBG628Ra01 100 μ g

Recombinant Triggering Receptor Expressed On Myeloid Cells 2 (TREM2)

Organism Species: *Rattus norvegicus* (Rat)

*Instruction
manual*

FOR IN VITRO USE AND RESEARCH USE ONLY

NOT FOR USE IN CLINICAL DIAGNOSTIC PROCEDURES

10th Edition (Revised in Jan, 2014)

[PROPERTIES]

Residues: Met1~Asp211 linked with CSSSTTTTTT

TTN

Tags: Two N-terminal Tags, His-tag and GST-tag

Accession: D3ZZ89

Host: *E. coli*

Purity: >90%

Endotoxin Level: <1.0EU per 1 μ g (determined by the LAL method).

Formulation: Supplied as lyophilized form in 20mL

Tris, 150mM NaCl, pH8.0, containing 1mM EDTA, 1mM

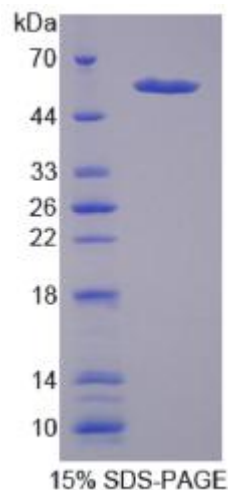
DTT, 0.01% sarcosyl, 5% trehalose, and preservative.

Predicted isoelectric point: 5.4

Predicted Molecular Mass:

54.4kDa

Applications: SDS-PAGE; WB; ELISA; IP.





TEL:4006-871-227 Web:www.ybio.net Email:shybio@126.com

(May be suitable for use in other assays to be determined by the end user.)

[USAGE]

Reconstitute in sterile ddH₂O.

[STORAGE AND STABILITY]

Storage: Avoid repeated freeze/thaw cycles.

Store at 2-8°C for one month.

Aliquot and store at -80°C for 12 months.

Stability Test: The thermal stability is described by the loss rate of the target protein. The loss rate was determined by accelerated thermal degradation test, that is, incubate the protein at 37°C for 48h, and no obvious degradation and precipitation were observed. (Referring from China Biological Products Standard, which was calculated by the Arrhenius equation.) The loss of this protein is less than 5% within the expiration date under appropriate storage condition.

[SEQUENCES]

The sequence of the target protein is listed below.

MEPLHVFVLL LVTELSQALN TTVLQGVAGQ SLRVSTYDA LRHWGRRKAW CRQLAEEGPC
QRVVSTHGVW LLAFLRKQNG STVITDDTLA GTVTITLRNL QAGDAGLYQC QSLRGREAEV
LQKVVEVLE DPLDDQDAGD LWVPEESESF EGAQVEHSTS RSQSGKTFSP PTSILLLLAC
VLLSKLLTAS ILWAVARGRQ KLETPVASGL D CSSSTTTTTT TTN