



TEL:4006-871-227 Web:www.ybio.net Email:shybio@126.com

YBA213Mu01 50μg

Recombinant Triggering Receptor Expressed On Myeloid Cells 1 (TREM1)

Organism Species: *Mus musculus* (Mouse)

*Instruction manual*

FOR IN VITRO USE AND RESEARCH USE ONLY

NOT FOR USE IN CLINICAL DIAGNOSTIC PROCEDURES

10th Edition (Revised in Jan, 2014)

## [ PROPERTIES ]

Residues: Ala21~Gly230

Tags: N-terminal His-Tag

Accession: Q9JKE2

Host: *E. coli*

Subcellular Location: Membrane; Single-pass  
type I membrane protein.

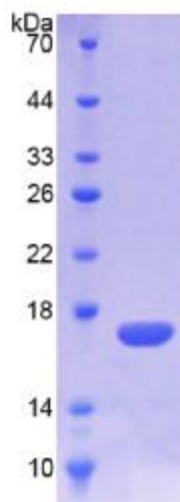
Purity: >95%

Endotoxin Level: <1.0EU per 1μg (determined by the LAL  
method).

Formulation: Supplied as lyophilized form in 20mM Tris,  
500mM NaCl, pH8.0, containing 1mM EDTA, 1mM DTT, 0.01%  
sarcosyl, 5% trehalose, and preservative.

Predicted isoelectric point: 8.4

Predicted Molecular Mass:



The possible reasons that the actual band size differs from the predicted are as follows:

24.7kDa

Accurate Molecular Mass: 17kDa as determined by SDS-PAGE reducing  
conditions. Applications: SDS-PAGE; WB; ELISA; IP.

(May be suitable for use in other assays to be determined by the end user.)



TEL:4006-871-227 Web:www.ybio.net Email:shybio@126.com

#### Note:

1. Splice variants: Alternative splicing may create different sized proteins from the same gene.
2. Relative charge: The composition of amino acids may affects the charge of the protein.
3. Post-translational modification: Phosphorylation, glycosylation, methylation etc.
4. Post-translation cleavage: Many proteins are synthesized as pro-proteins, and then cleaved to give the active form.
5. Polymerization of the target protein: Dimerization, multimerization etc.

#### [ USAGE ]

Reconstitute in ddH<sub>2</sub>O.

#### [ STORAGE AND STABILITY ]

Storage: Avoid repeated freeze/thaw cycles.

Store at 2-8°C for one month.

Aliquot and store at -80°C for 12 months.

Stability Test: The thermal stability is described by the loss rate of the target protein. The loss rate was determined by accelerated thermal degradation test, that is, incubate the protein at 37°C for 48h, and no obvious degradation and precipitation were observed. (Referring from China Biological Products Standard, which was calculated by the Arrhenius equation.) The loss of this protein is less than 5% within the expiration date under appropriate storage condition.

#### [ SEQUENCES ]

The sequence of the target protein is listed below.

AIVLEEERYD LVGEQTLTVK CPFNIMKYAN SQKAWQRLPD GKEPLTLVVT QRPFTRPSEV  
HMGKFTLKHD PSEAMLQVQM TDLQVTD SGL YRCVIYHPPN DPVVLFPVR LVVTKGSSDV  
FTPVIIPITR LTERPILITT KYSPSDTTTT RSLPKPTAVV SSPGLGVTII NGTDADSVST  
SSVTISVICG LLSKSLVFII LFIVTKRTFG

#### [ REFERENCES ]



TEL:4006-871-227 Web:www.ybio.net Email:shybio@126.com

1. Bouchon A., *et al.* (2000) J. Immunol. 164:4991-4995.
2. Kelker M.S., *et al.* (2004) J. Mol. Biol. 344:1175-1181.
3. Murakami Y., *et al.* (2007) J. Immunol. 178:1144-1150.
4. Ornatowska M., *et al.* (2007) Am. J. Physiol. Lung Cell Mol. Physiol. 293:L1377-84.