



TEL:4006-871-227 Web:www.ybio.net Email:shybio@126.com

YBC405Hu01 100ug

Recombinant Cisplatin Resistance Associated Overexpressed Protein (CROP)

Organism Species: Homo sapiens (Human)

*Instruction  
manual*

FOR IN VITRO USE AND RESEARCH USE ONLY

NOT FOR USE IN CLINICAL DIAGNOSTIC PROCEDURES

10th Edition (Revised in Jan,  
2014)

## [ PROPERTIES ]

Residues: Met1~Leu247

Tags: Two N-terminal Tags, His-tag and T7-tag

Accession: 095232

Host: *E. coli*

Subcellular Location: Nucleus.

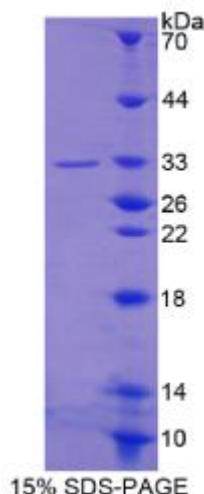
Purity: >95%

Endotoxin Level: <1.0EU per 1  $\mu$ g (determined by  
the LAL method).

Formulation: Supplied as lyophilized form in 20mM

Tris, 150mM NaCl, pH8.0, containing 1mM EDTA, 1mM

DTT, 0.01% sarcosyl, 5% trehalose, and  
preservative.





TEL:4006-871-227 Web:www.ybio.net Email:shybio@126.com

Predicted isoelectric point:

5.7 Predicted Molecular Mass:

32.1kDa

Applications: SDS-PAGE; WB; ELISA; IP.

(May be suitable for use in other assays to be determined by the end user.)

## [ USAGE ]

Reconstitute in sterile ddH<sub>2</sub>O.

## [ STORAGE AND STABILITY ]

Storage: Avoid repeated freeze/thaw cycles.

Store at 2-8°C for one month.

Aliquot and store at -80°C for 12 months.

Stability Test: The thermal stability is described by the loss rate of the target protein. The loss rate was determined by accelerated thermal degradation test, that is, incubate the protein at 37°C for 48h, and no obvious degradation and precipitation were observed. (Referring from China Biological Products Standard, which was calculated by the Arrhenius equation.) The loss of this protein is less than 5% within the expiration date under appropriate storage condition.

## [ SEQUENCES ]

The sequence of the target protein is listed below.

MISAAQLLDE LMGRDRNLAP DEKRSNVRWD HESVCKYYLC GFCAELFTN TRSDLGPCEK  
IHDENLRKQY EKSSRFMKVG YERDFRLYLQ SLLAEVERRI RRGHARLALS QNQQSSGAAG  
PTGKNEEKIQ VLTDKIDVLL QQIEELGSEG KVEEAQGMMK LVEQLKEERE LLRSTTSTIE  
SFAAQEKQME VCEVCGAFLI VGDAQSRVDD HLMGKQHMGY AKIKATVEEL KEKLRKRTTE  
PDRDERL