



TEL:4006-871-227 Web:www.ybio.net Email:shybio@126.com

**YBA159Hu01 50µg**

**Recombinant Squamous Cell Carcinoma Antigen 2 (SCCA2)**

**Organism Species: Homo sapiens (Human)**

***Instruction manual***

FOR IN VITRO USE AND RESEARCH USE ONLY

NOT FOR USE IN CLINICAL DIAGNOSTIC PROCEDURES

11th Edition (Revised in May, 2016)

## **[ PROPERTIES ]**

**Source:** Prokaryotic expression.

**Host:** *E. coli*

**Residues:** Ser320~Pro390

**Tags:** N-terminal His-Tag

**Subcellular Location:** Cytoplasm.

**Purity:** >92%

**Traits:** Freeze-dried powder

**Buffer formulation:** PBS, pH7.4, containing 1mM DTT, 5% trehalose, 0.01% sarcosyl and Proclin300.

**Original Concentration:** 200ug/mL

**Applications:** SDS-PAGE; WB; ELISA; IP; CoIP; Purification; Amine Reactive Labeling.

(May be suitable for use in other assays to be determined by the end user.)

**Predicted isoelectric point:** 6.3

**Predicted Molecular Mass:** 9.3kDa

**Accurate Molecular Mass:** 9kDa as determined by SDS-PAGE reducing conditions.

## **[ USAGE ]**

Reconstitute in PBS (pH7.4) to a concentration of 0.1-1.0 mg/mL. Do not vortex.

## [ STORAGE AND STABILITY ]

**Storage:** Avoid repeated freeze/thaw cycles.

Store at 2-8°C for one month.

Aliquot and store at -80°C for 12 months.

**Stability Test:** The thermal stability is described by the loss rate. The loss rate was determined by accelerated thermal degradation test, that is, incubate the protein at 37°C for 48h, and no obvious degradation and precipitation were observed. The loss rate is less than 5% within the expiration date under appropriate storage condition.

## [ SEQUENCE ]

S HGLSVSKVLH KAFVEVTEEG VEAAAATAVV  
VVELSSPSTN EELCCNHPFL FFIRQNKTN ILFYGRFSPP

## [ IDENTIFICATION ]

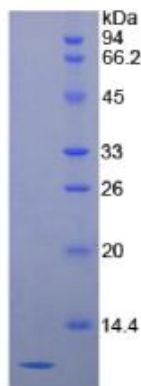


Figure 1. SDS-PAGE



TEL:4006-871-227 Web:[www.ybio.net](http://www.ybio.net) Email:[shybio@126.com](mailto:shybio@126.com)