



TEL:4006-871-227 Web:www.ybio.net Email:shybio@126.com

YBD578Hu01 100ug

Recombinant Mitogen Activated Protein Kinase 13 (MAPK13)

Organism Species: Homo sapiens (Human)

*Instruction
manual*

FOR IN VITRO USE AND RESEARCH USE ONLY

NOT FOR USE IN CLINICAL DIAGNOSTIC PROCEDURES

10th Edition (Revised in Jan, 2014)

[PROPERTIES]

Residues: Met1~Leu365

Tags: Two N-terminal Tags, His-tag and T7-tag

Accession: 015264

Host: *E. coli*

Subcellular Location: Cytosol.

Purity: >95%

Endotoxin Level: <1.0EU per 1 μ g (determined by the LAL method).

Formulation: Supplied as lyophilized form in 20mL

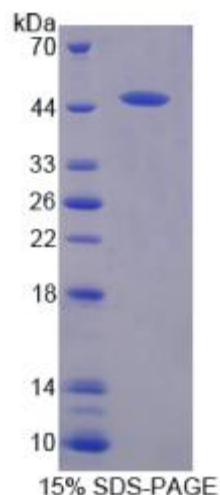
Tris, 150mM NaCl, pH8.0, containing 1mM EDTA, 1mM DTT, 0.01% sarcosyl, 5% trehalose, and preservative.

Predicted isoelectric point: 8.5

Predicted Molecular Mass:

45.8kDa

Applications: SDS-PAGE; WB; ELISA; IP.





TEL:4006-871-227 Web:www.ybio.net Email:shybio@126.com

(May be suitable for use in other assays to be determined by the end user.)

[USAGE]

Reconstitute in sterile ddH₂O.

[STORAGE AND STABILITY]

Storage: Avoid repeated freeze/thaw cycles.

Store at 2-8°C for one month.

Aliquot and store at -80°C for 12 months.

Stability Test: The thermal stability is described by the loss rate of the target protein. The loss rate was determined by accelerated thermal degradation test, that is, incubate the protein at 37°C for 48h, and no obvious degradation and precipitation were observed. (Referring from China Biological Products Standard, which was calculated by the Arrhenius equation.) The loss of this protein is less than 5% within the expiration date under appropriate storage condition.

[SEQUENCES]

The sequence of the target protein is listed below.

MSLIRKKGFY KQDVNKTAW E LPKTYVSPH VGSGAYGSVC SAIDKRSGEK VAIKKLSRPF
QSEIFAKRAY RELLLLKHMQ HENVIGLLDV FTPASSLRNF YDFYLVMPFM QTDLQKIMGM
EFSEEKIQYL VYQMLKGLKY IHSAGVVHRD LKPGNLAVNE DCELKILDFG LARHADAEMT
GYVVTRWYRA PEVILSWMHY NQTVDIWSVG CIMAEMLTGK TLFKGKDYLD QLTQILKVTG
VPGTEFVQKL NDKAAKSYIQ SLPQTPRKDF TQLFPRASPQ AADLLEKMLE LDVDKRLTAA
QALTHPFFEP FRDPEEETEA QQPFD DSLEH EKLTVDEWKQ HIYKEIVNFS PIARKDSRRR
SGMKL