



TEL:4006-871-227 Web:www.ybio.net Email:shybio@126.com

YBB189Hu01 100µg

Recombinant Asialoglycoprotein Receptor 1 (ASGR1)

Organism Species: Homo sapiens (Human)

Instruction manual

FOR IN VITRO USE AND RESEARCH USE ONLY

NOT FOR USE IN CLINICAL DIAGNOSTIC PROCEDURES

11th Edition (Revised in May, 2016)

[PROPERTIES]

Source: Prokaryotic expression.

Host: *E. coli*

Residues: Phe77~Pro289

Tags: N-terminal His-Tag

Homology: Mouse 98%, rat 80%

Tissue Specificity: Liver, brain, lung, blood.

Subcellular Location: Membrane; Single-pass type II membrane protein.

Secreted.

Purity: >95%

Endotoxin Level: <1.0EU per 1µg (determined by the LAL method).

Traits: Freeze-dried powder

Buffer formulation: 100mM NaHCO₃, 500mM NaCl, pH8.3, containing 1mM EDTA, 1mM DTT, 0.01% sarcosyl, 5%Trehalose and Proclin300.

Original Concentration: 200ug/mL

Applications: SDS-PAGE; WB; ELISA; IP; CoIP; Reporter Assays; Purification; Amine Reactive Labeling.

(May be suitable for use in other assays to be determined by the end user.)

Predicted isoelectric point: 5.8

Predicted Molecular Mass: 28.2kDa

Accurate Molecular Mass: 31kDa as determined by SDS-PAGE reducing conditions.



1

[USAGE]

Reconstitute in 100mM NaHCO₃, 500mM NaCl (pH8.3) to a concentration of 0.1-1.0 mg/mL. Do not vortex.

[STORAGE AND STABILITY]

Storage: Avoid repeated freeze/thaw cycles.

Store at 2-8°C for one month.

Aliquot and store at -80°C for 12 months.

Stability Test: The thermal stability is described by the loss rate. The loss rate was determined by accelerated thermal degradation test, that is, incubate the protein at 37°C for 48h, and no obvious degradation and precipitation were observed. The loss rate is less than 5% within the expiration date under appropriate storage condition.

[SEQUENCE]

```
FSNF TASTAQVKG LSTQGGNVGR  
KMKSLESQLE KQKDLSEDH SLLLVHKQF VSDLRSLSCQ MAALQNGSE  
RTCCPVNWVE HERSCYWFSR SGKAWADADN YCRLEDAHLV VVTSWEEQKF  
VQHHIGPVNT WMGLHDQNGP WKWVDGTDYE TGFKNWRPEQ PDDWYGHGLG  
GGEDCAHFTD DGRWNDDVCQ RPYRWVCETE LDKASQEP
```

[IDENTIFICATION]

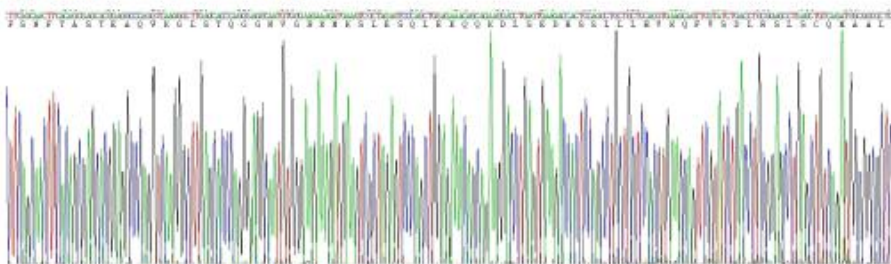


Figure 1. Gene Sequencing (Extract)



T

EL:4006-871-
227 Web:www.ybi
o.net Email:shy
bio@126.com

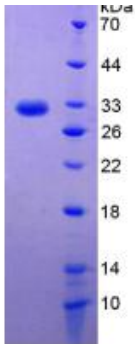


Figure 2. SDS-PAGE